

STATE OF NEVADA
DEPARTMENT OF CONSERVATION AND NATURAL RESOURCES
DIVISION OF WATER RESOURCES

JASON KING, P.E.
STATE ENGINEER



STATEWIDE GROUNDWATER PUMPAGE INVENTORY

CALENDAR YEAR 2015

November 27, 2017

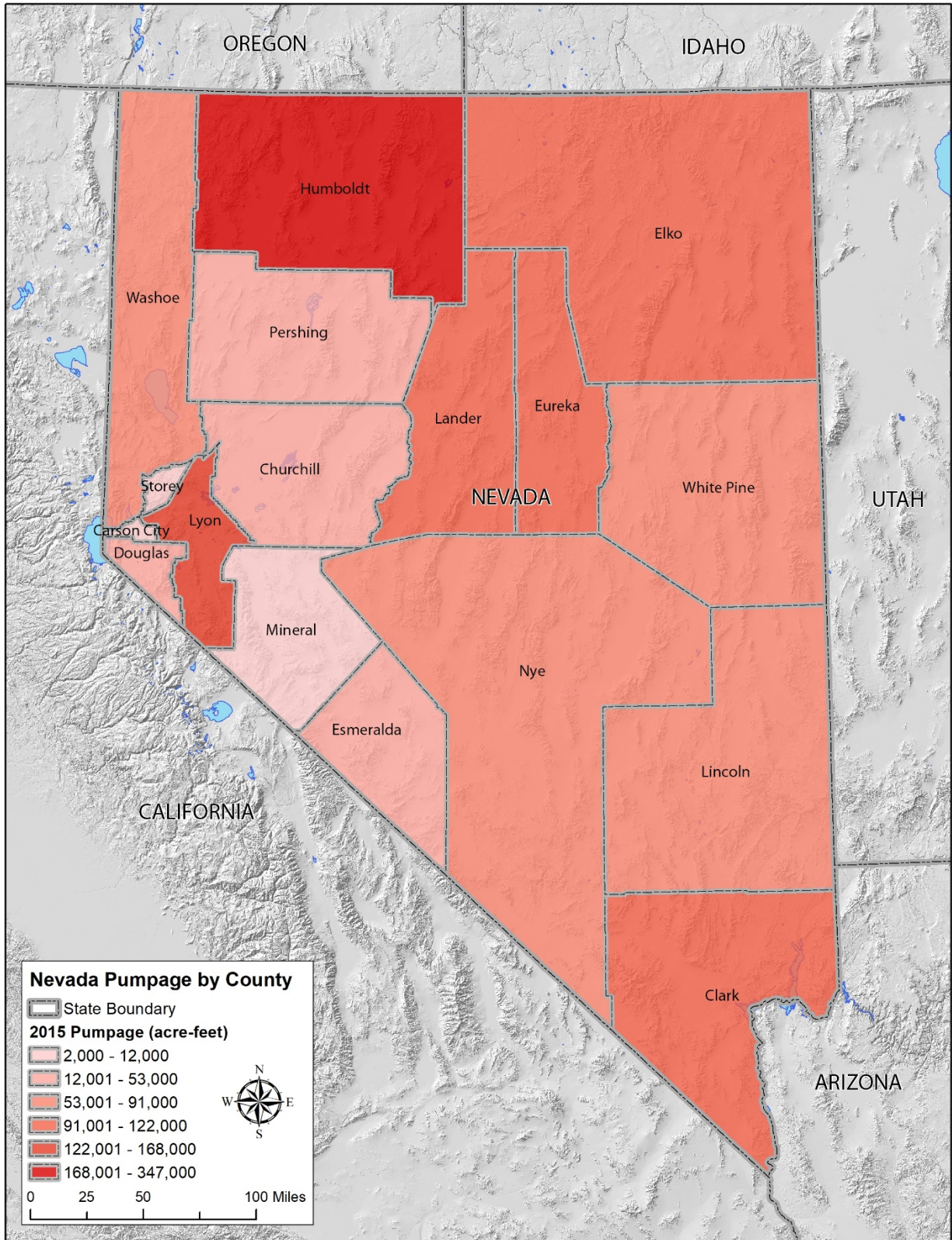


TABLE OF CONTENTS

	Page
ABSTRACT.....	1
STATEWIDE SUMMARY	2
PURPOSE AND SCOPE.....	3
SOURCES OF DATA AND METHODS TO ESTIMATE PUMPAGE	3
IRRIGATION	3
MINING AND MILLING.....	4
STOCKWATERING	4
DOMESTIC	5
OTHER MANNERS OF USE	5
TABLES	6
FIGURES.....	7
APPENDIX A. GROUNDWATER PUMPAGE BY BASIN AND MANNER OF USE.....	30

LIST OF TABLES

	Page
Table 1. Estimated 2015 groundwater pumpage (acre-feet) by county and manner of use.....	6

LIST OF FIGURES

	Page
Figure 1. Comparison between committed water resources and pumpage for 2015 by manner of use.....	2
Figure 2. Estimated 2015 groundwater pumpage (acre-feet) graphed by county and manner of use.....	7
Figure 3. Groundwater wells in Carson City, Douglas, Lyon, and Storey Counties.....	8
Figure 4. Groundwater wells in Churchill County.....	9
Figure 5. Groundwater wells in Clark County.....	10
Figure 6. Groundwater wells in Elko County.....	11
Figure 7. Groundwater wells in Esmeralda and Mineral Counties.....	12
Figure 8. Groundwater wells in Eureka and Lander Counties.....	13
Figure 9. Groundwater wells in Humboldt County.....	14
Figure 10. Groundwater wells in Lincoln County.....	15
Figure 11. Groundwater wells in Nye County.....	16

Figure 12. Groundwater wells in Pershing County.....	17
Figure 13. Groundwater wells in northern Washoe County.	18
Figure 14. Groundwater wells in southern Washoe County.....	19
Figure 15. Groundwater wells in White Pine County.....	20
Figure 16. Carson City pumpage by manner of use.....	21
Figure 17. Churchill County pumpage by manner of use.....	21
Figure 18. Clark County pumpage by manner of use.....	22
Figure 19. Douglas County pumpage by manner of use.....	22
Figure 20. Elko County pumpage by manner of use.	23
Figure 21. Esmeralda County pumpage by manner of use.....	23
Figure 22. Eureka County pumpage by manner of use.....	24
Figure 23. Humboldt County pumpage by manner of use.....	24
Figure 24. Lander County pumpage by manner of use.....	25
Figure 25. Lincoln County pumpage by manner of use.....	25
Figure 26. Lyon County pumpage by manner of use.....	26
Figure 27. Mineral County pumpage by manner of use.	26
Figure 28. Nye County pumpage by manner of use.	27
Figure 29. Pershing County pumpage by manner of use.....	27
Figure 30. Storey County pumpage by manner of use.....	28
Figure 31. Washoe County pumpage by manner of use.....	28
Figure 32. White Pine County pumpage by manner of use.....	29

ABSTRACT

This report presents an estimate of the total amount of groundwater pumped in the State of Nevada for calendar year 2015. The estimate includes pumpage of all public waters appropriated by permits and certificates issued by the State Engineer, by adjudicated and unadjudicated pre-statutory claims of vested right, and by domestic wells. Primary sources of data were existing inventories, pumpage records from water right owners, duty of water rights, and known irrigated acres. Methods to estimate pumpage from these data sources are described herein. The pumpage amounts are organized by manner of use and presented by county and hydrographic basin. Graphs showing the pumpage for each county are included in this report, as well as maps showing the location of groundwater wells within each county. Surface water use is not included in this report.

Total groundwater pumpage in Nevada for calendar year 2015 is estimated to be approximately **1,400,000 acre-feet**. The largest manner of use is irrigation at 70% of total statewide pumpage. Other large uses are municipal (10%) and mining and milling (7%). Pumpage by domestic wells is estimated to be approximately 3% of total statewide pumpage.

STATEWIDE SUMMARY

Committed water resource data for the state are summarized by manner of use below. Actual groundwater pumpage totals for calendar year 2015 are presented by manner of use in Figure 1.

COMMITTED GROUNDWATER RESOURCE: 3,070,390 ACRE-FEET, DATE: May 2016

COMMERCIAL	17,378	CONSTRUCTION	1,574	DOMESTIC ¹	99,856
ENVIRONMENTAL	23,374	INDUSTRIAL	116,668	IRRIGATION	1,852,257
MINING & MILLING	334,457	MUNICIPAL	470,480	OTHER	4,727
POWER	0	QUASI-MUNICIPAL	89,169	RECREATION	24,724
STOCKWATERING	24,056	WILDLIFE	11,670		

Note: Committed groundwater resource data are accurate for May 2016. Manner of use totals vary over time, as rights are not necessarily static. Individual rights may be subject to change applications, certification, withdrawals, and cancellations; each of these circumstances could affect the duty, diversion rate, and acreage associated with a given right. The value associated with each manner of use category does not include those portions that have been relinquished in support of domestic wells, but does include groundwater supplemental to surface water.

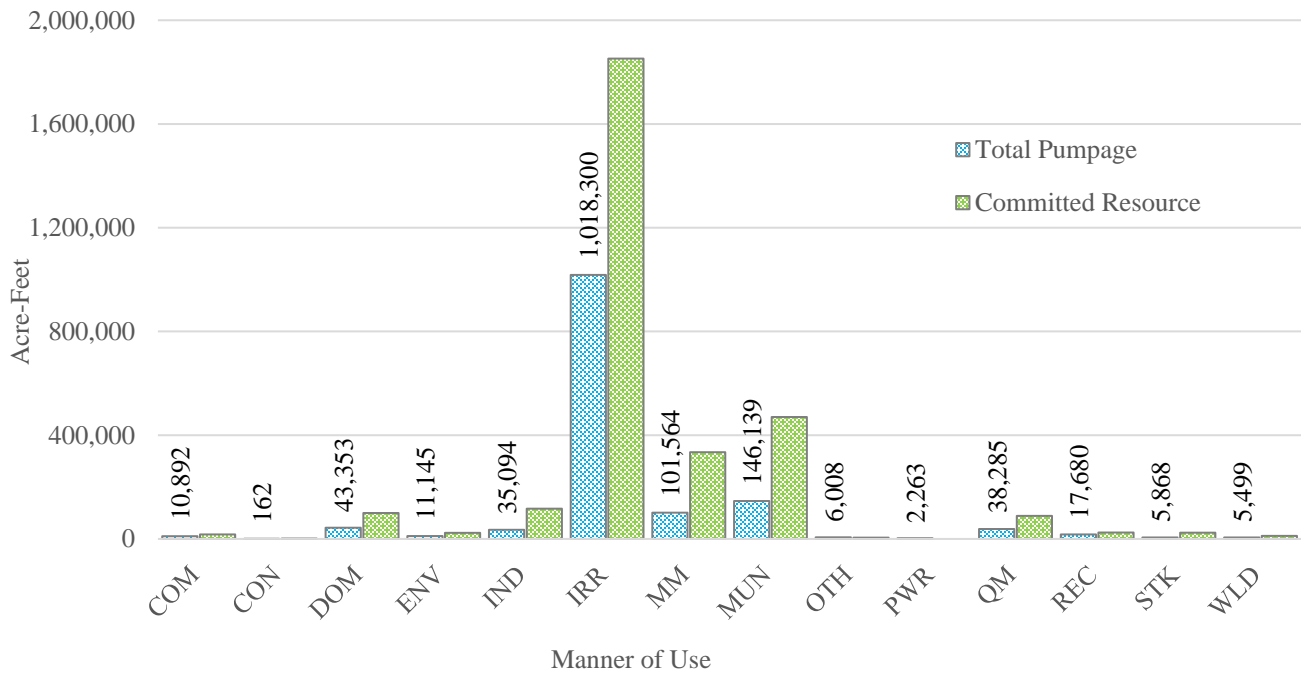


Figure 1. Comparison between committed water resources and pumpage for 2015 by manner of use.

¹ Committed domestic resource was calculated by multiplying the number of exempt domestic wells by 2 acre-feet per annum. The total number of domestic wells, determined by a query of the Nevada Division of Water Resources Well Log Database, is estimated to be 49,928.

PURPOSE AND SCOPE

The purpose of this report is to inventory all the groundwater resources allocated and described by the Office of the State Engineer, Nevada Division of Water Resources (NDWR). The estimated amount of groundwater pumped under permits, certificates, adjudicated and unadjudicated vested claims, and exempt domestic wells within the State of Nevada for calendar year 2015 is described in the following sections.

The U.S. Geological Survey (USGS) publishes groundwater use for all states at 5-year intervals. The most recent publication, USGS Circular 1405², was released in 2014 and summarizes pumpage in each state by county for the year 2010. The USGS is currently preparing water use estimates for 2015; these estimates will be presented by county and hydrologic unit code level 8. In general, the methods used by the USGS to estimate pumpage are different from the methods used by NDWR and therefore the reports are not directly comparable.

SOURCES OF DATA AND METHODS TO ESTIMATE PUMPAGE

NDWR conducts annual pumpage and crop inventories for numerous individual hydrographic basins throughout the State. All reported data were incorporated into this statewide assessment. Inventory data from 2014 were used if the 2015 inventory was not available and several prior inventories were reasonably consistent. If inventories were completed for water year instead of calendar year, then water year totals were used to estimate calendar year totals. Methods describing the estimation of water usage are contained in each of these inventory reports.

Pumpage totals are often recorded by water right owners and reported to NDWR as a condition of the permit under which the groundwater was appropriated. Where this data was available, it was accounted for in this statewide report. If 2015 reported pumpage was not available but reported pumpage from several prior years was reasonably consistent, then total pumpage data from the most recent year was used. For some permitted mine dewatering and geothermal development where a substantial volume of water was recharged into the aquifer and that volume was reported to the State Engineer, the recharged water was subtracted to obtain the total pumpage presented in this report. For purposes of allocating pumpage by county and hydrographic basin, all pumpage was assigned to its permitted point of diversion.

Supplemental group relationships were resolved prior to estimating groundwater pumpage for all manners of use. Where supplemental groups contained permits with multiple manners of use, the estimated pumpage was assigned to the manner of use associated with the senior permit in the group.

Table 1 and Figure 2 present statewide pumpage data, broken down by county and manner of use. Figures 3 to 15 present maps showing groundwater wells for individual counties; Figures 16 to 32 show manner of use data for each county.

IRRIGATION

Irrigation pumpage that was not inventoried or reported was estimated by using 2015 National Agriculture Imagery Program (NAIP) imagery and normalized difference vegetation index (NDVI) data. Maximum NDVI was used to determine where crops were irrigated between May 1 and September 30, 2015, using

² Maupin, M.A., Kenny, J.F., Hutson, S.S., Lovelace, J.K., Barber, N.L., and Linsey, K.S., 2014, Estimated use of water in the United States in 2010: U.S. Geological Survey Circular 1405, 56 p., <https://dx.doi.org/10.3133/cir1405>.

the web-based Climate Engine³ tool. Year 2015 NAIP imagery was used to determine the number of acres under cultivation and the method in which the water was applied (pivot, wheel line, flood). Assumed efficiencies were 0.85 for pivot, 0.75 for wheel lines, and 0.60 for flood. Pumpage was then determined by multiplying the number of acres by the net irrigation water requirement rate (either for low-managed pasture grass or alfalfa, depending on whether the crops appeared to be sparse or full-cover and well-watered)⁴, then dividing by the efficiency of the application method. If the resulting pumpage estimate exceeded the duty of the right, then duty was used as total pumpage. If the maximum NDVI indicated that irrigation occurred during the period of inquiry, it was assumed that irrigation occurred over the entire season.

Groundwater pumpage that was permitted or certificated as a supplemental right to surface water, and was not inventoried or reported, was estimated based on streamflow in 2015. In the Humboldt River system below Palisade, groundwater pumpage supplemental to decreed surface water was estimated to be 90% of the total duty. Elsewhere in the State, groundwater pumpage supplemental to streams was estimated to be 75% of duty. Groundwater pumpage supplemental to springs was assumed to be 50% statewide, except in the White River Valley where it was calculated to be 37% based on spring flow measurements. Note that 2015 was an exceptionally dry year across most of the west, and Nevada was no exception.

MINING AND MILLING

Groundwater use for mining and milling projects was estimated by basin and county primarily by reviewing reported pumpage and recharge data (where applicable). Where these data were not available, permits, records from the Nevada Division of Minerals, and NAIP imagery were examined to determine whether the project appeared to be operating. If the projects appeared operational, duty was assigned as pumpage. If the project did not appear operational, pumpage was estimated to be zero. Included in consumptive use estimates are evaporative or enhanced evapotranspiration losses due to discharge of groundwater pumped for dewatering to rapid infiltration basins, for irrigation, or to surface water, where these data were available.

STOCKWATERING

Stockwatering use estimates were provided at the county level by the USGS, based on animal unit numbers contained in the Nevada Agricultural Statistics Annual Bulletin – 2015 Crop Year⁵. These data were then used to estimate stockwater consumption at the basin level by determining the duty of stockwater permits in each basin (from a query of the NDWR Permits Database), dividing the duty of each permit by the total duty of permits in the county, and multiplying the result by the USGS's total county stockwater consumption number.

³ Huntington, J., Hegewisch, K., Daudert, B., Morton, C., Abatzoglou, J., McEvoy, D., and Erickson, T. (2017). Climate Engine: Cloud Computing of Climate and Remote Sensing Data for Advanced Natural Resource Monitoring and Process Understanding. Bulletin of the American Meteorological Society, <http://journals.ametsoc.org/doi/abs/10.1175/BAMS-D-15-00324.1>

⁴ Huntington, J.L., and Allen, R.G. 2010. Evapotranspiration and net irrigation water requirements for Nevada. Nevada Division of Water Resources; http://water.nv.gov/mapping/et/Docs/Evapotranspiration_and_Net_Irrigation_Requirements_for_Nevada_Compiled.pdf.

⁵ Rumberg, S. 2017. *Nevada Agricultural Statistics Annual Bulletin 2015 Crop Year*. United States Department of Agriculture; https://www.nass.usda.gov/Statistics_by_State/Nevada/Publications/Annual_Statistical_Bulletin/2010s/201702NVCropYr2015.pdf.

DOMESTIC

Domestic use was estimated based on the number of active domestic wells in each basin. This number was determined by querying the NDWR Well Log Database, and multiplying the resulting number of wells by the appropriate number of acre-feet per year. In most basins, the assumed annual pumpage for each well is one acre-foot; however, in some of the inventoried basins, the assumed annual pumpage is less than one acre-foot per well.

OTHER MANNERS OF USE

For all other manners of use that were not inventoried or reported, pumpage was estimated by a query of the NDWR Permits Database for water rights that were certificated, permitted with a proof of completion filed, or claimed as pre-statutory vested rights. If water rights were known to be inactive based on examination of the permit file or other records, it was assumed that no pumpage occurred. Otherwise, the water rights were assumed to be active and pumpage was estimated to be the annual duty associated with the certificate, permit, or claim.

TABLES

Table 1. Estimated 2015 groundwater pumpage (acre-feet) by county and manner of use.

Manner of Use	COM	CON	DOM	ENV	IND	IRR	MM	MUN	OTH	PWR	QM	REC	STK	WLD	Total
Carson City	26	0	1,032	1	3	18	0	5,350	0	0	82	0	2	0	6,515
Churchill	768	1	4,145	151	12,139	6,691	9	3,046	0	0	2,867	131	341	326	30,615
Clark	1,363	71	5,780	2,784	4,125	5,216	2,197	59,698	977	0	10,663	5,410	21	114	98,420
Douglas	105	0	3,934	0	0	20,993	0	14,681	3,080	0	2,439	382	130	0	45,743
Elko	1,386	23	3,320	1,227	1,522	63,813	25,485	12,323	1,631	0	2,792	150	1,499	37	114,246
Esmeralda	206	0	223	0	0	28,954	12,121	46	1	0	159	167	80	0	41,956
Eureka	14	0	215	17	1,669	99,174	15,655	1,704	0	0	543	0	497	0	119,488
Humboldt	765	0	1,841	241	6,235	322,829	10,089	3,259	184	0	652	838	295	0	347,228
Lander	2	0	584	2,217	206	99,417	7,695	1,111	0	1,177	350	248	275	0	113,283
Lincoln	105	0	465	0	37	57,003	3	3,163	9	0	53	40	213	60	61,151
Lyon	1,630	1	4,581	0	4,596	115,612	265	7,260	0	0	1,523	5,990	254	3,372	145,085
Mineral	35	0	85	9	72	6,544	2,458	945	0	0	1,882	0	64	304	12,399
Nye	2,502	5	6,167	0	795	60,282	7,860	5,006	46	0	2,769	2,705	746	5	88,888
Pershing	439	8	480	8	0	49,446	1,150	1,343	0	0	429	4	87	7	53,400
Storey	55	0	848	0	192	0	42	57	0	0	848	0	0	1	2,044
Washoe	1,426	33	8,984	4,489	2,864	18,218	31	21,239	80	0	8,644	1,580	1,075	1,211	69,875
White Pine	65	20	669	0	637	64,090	16,504	5,908	0	1,086	1,590	34	289	62	90,954
Total Pumpage	10,892	162	43,353	11,145	35,094	1,018,300	101,564	146,139	6,008	2,263	38,285	17,680	5,868	5,499	1,442,252

FIGURES

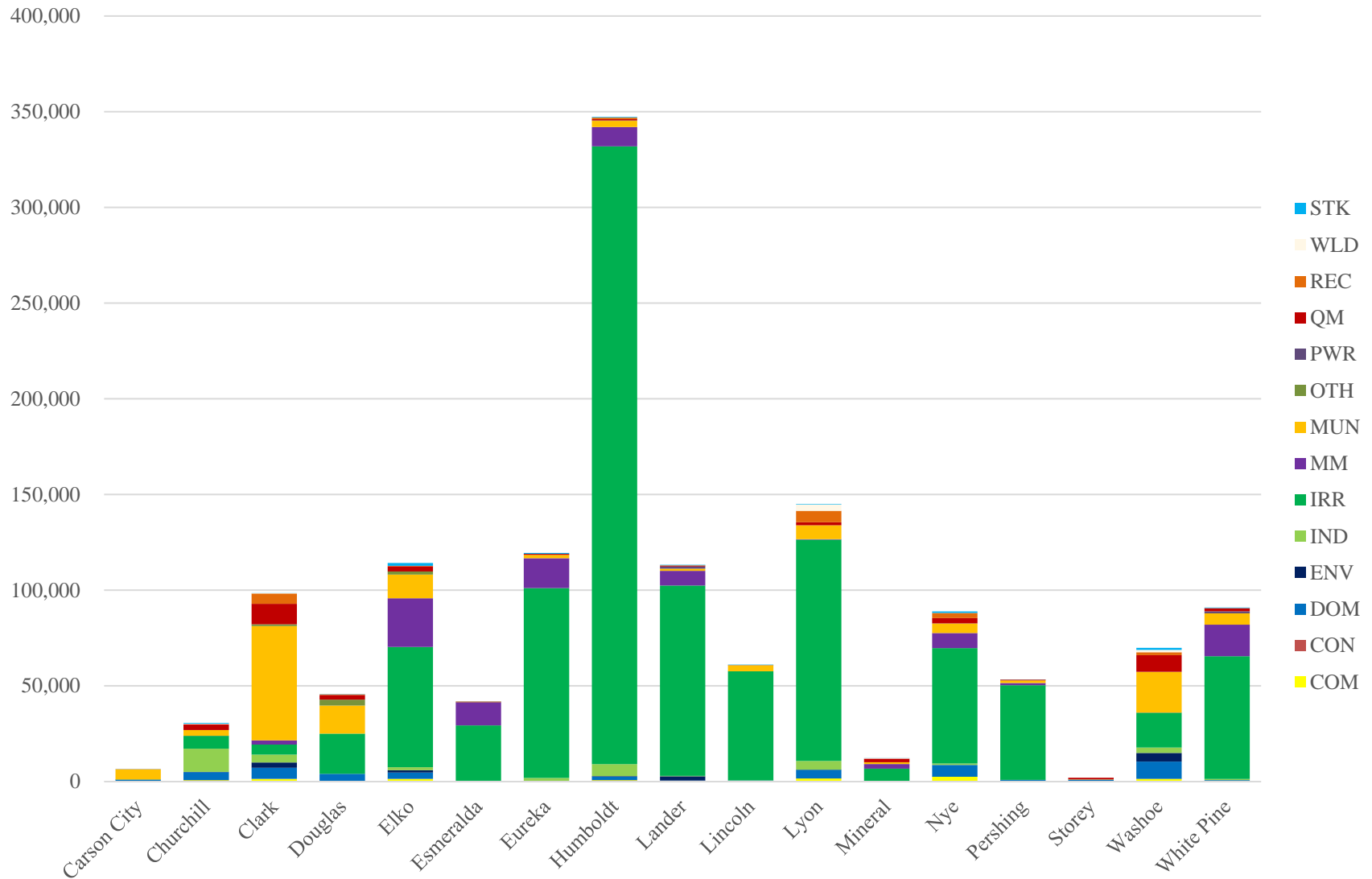


Figure 2. Estimated 2015 groundwater pumpage (acre-feet) graphed by county and manner of use.

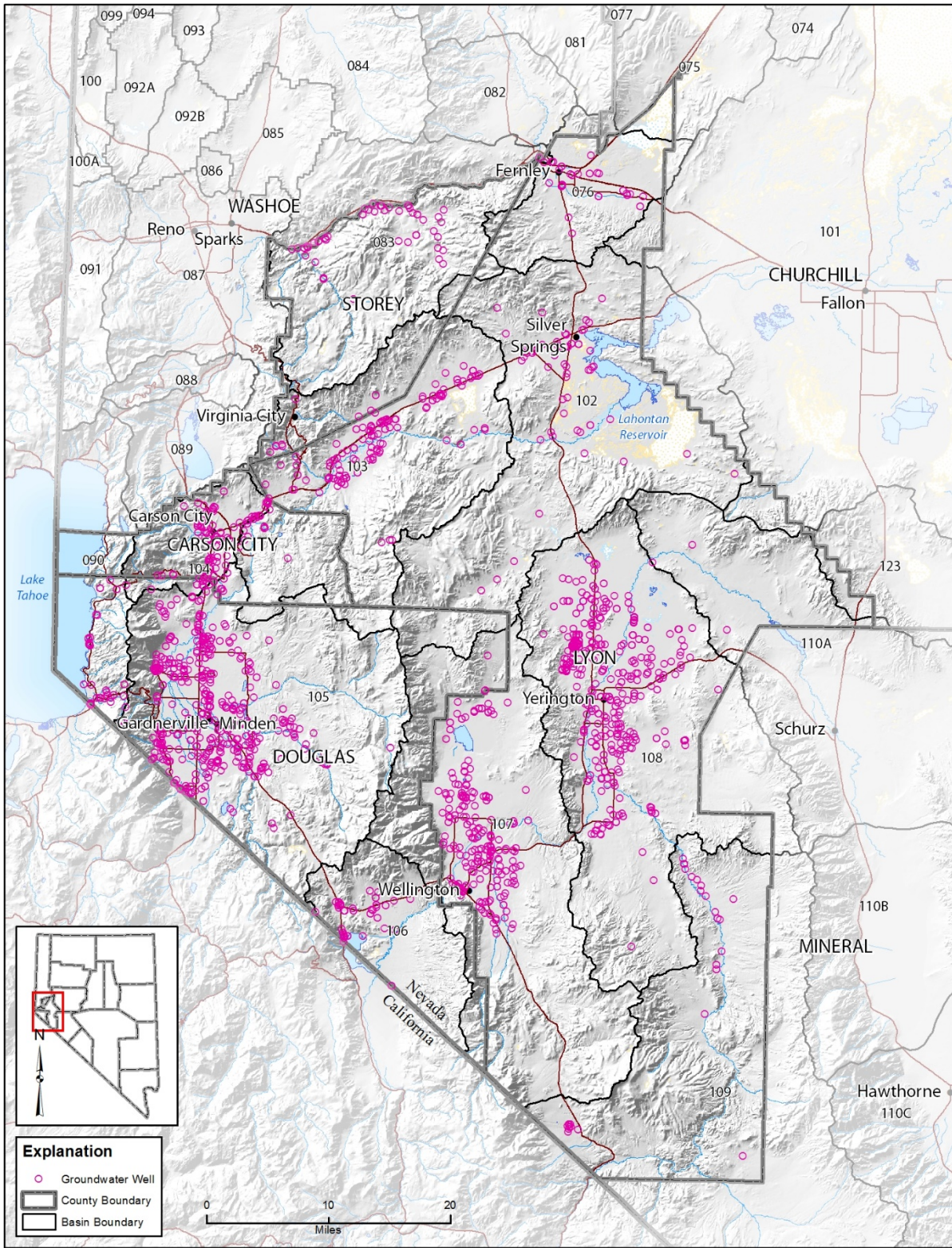


Figure 3. Groundwater wells in Carson City, Douglas, Lyon, and Storey Counties.

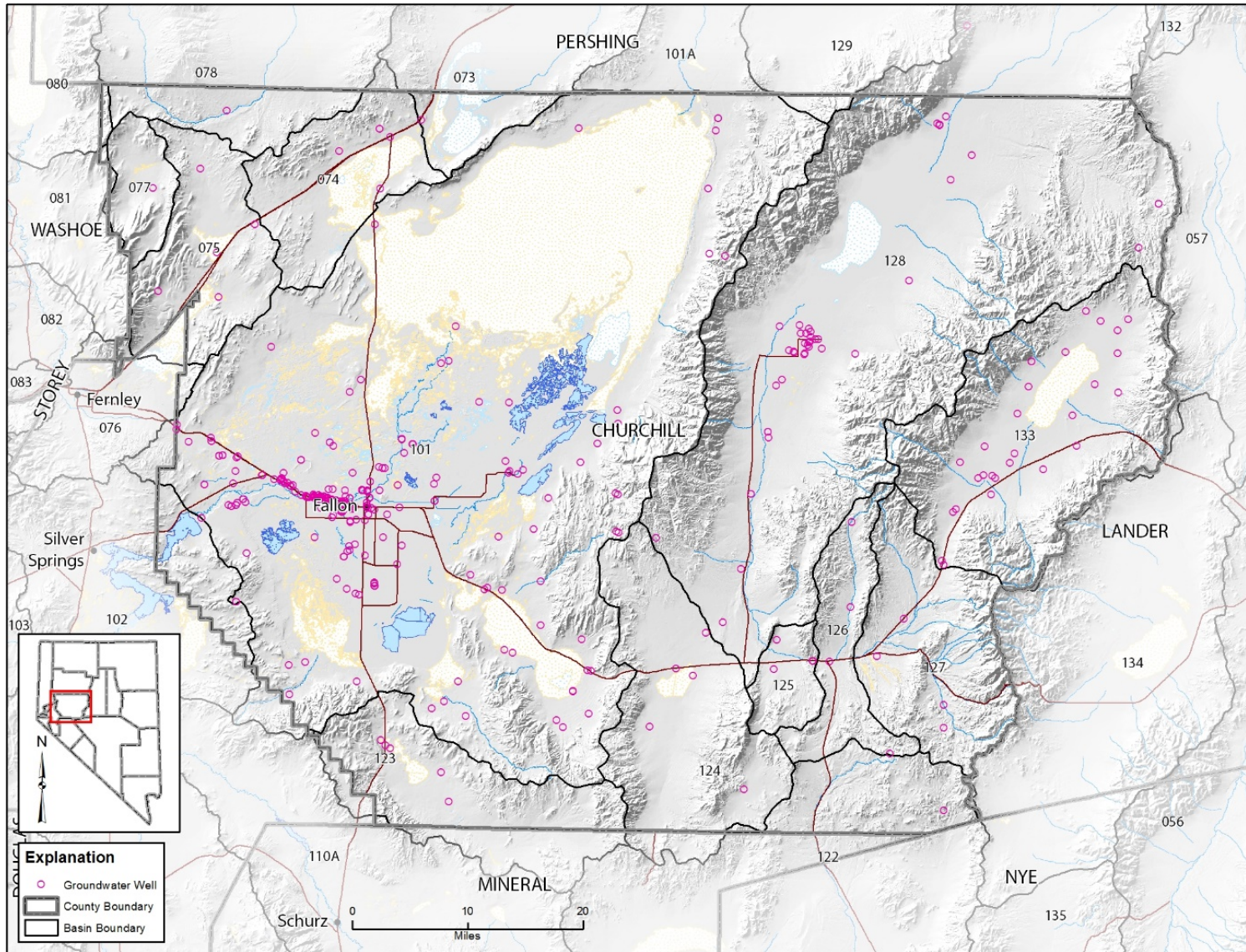


Figure 4. Groundwater wells in Churchill County.

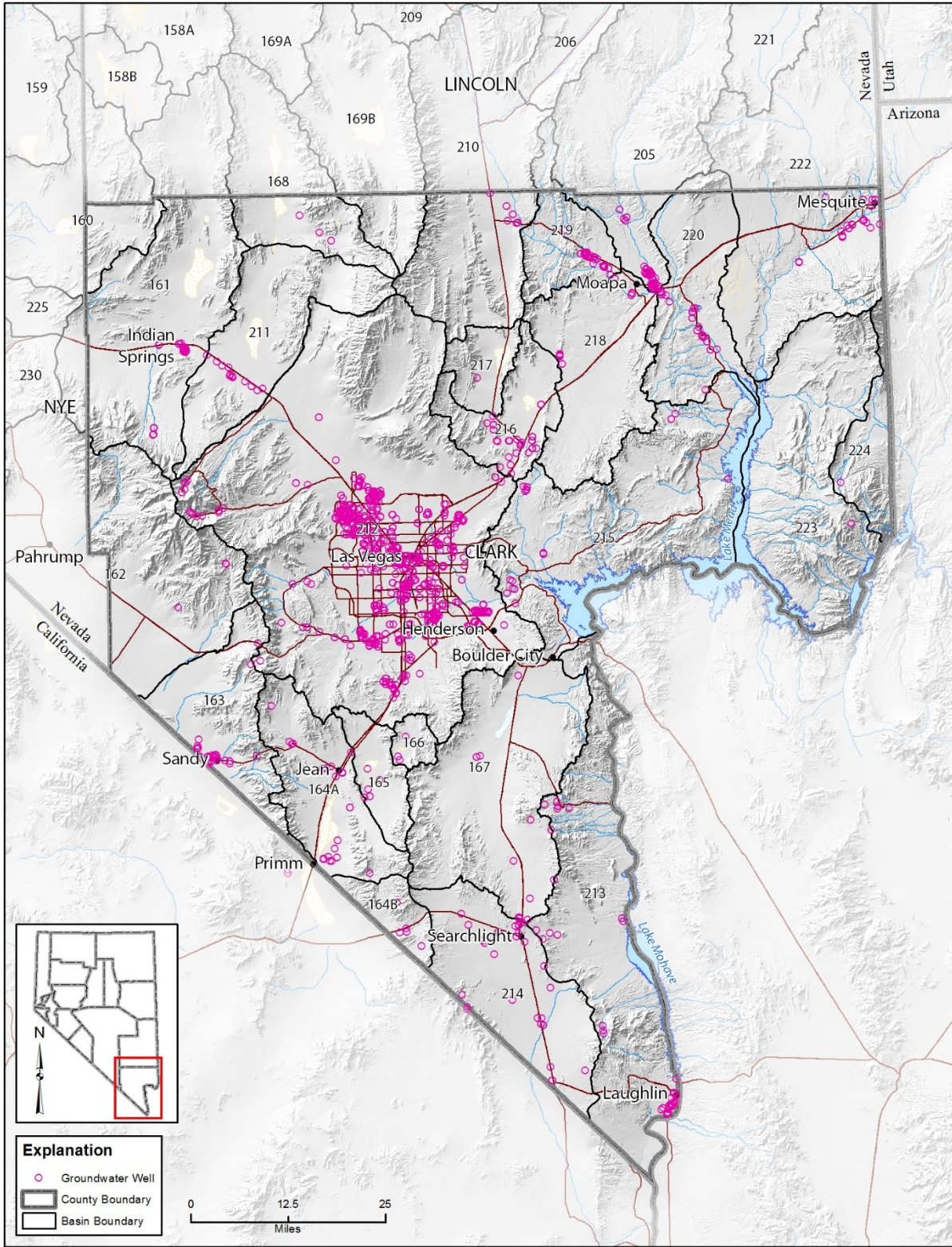


Figure 5. Groundwater wells in Clark County.

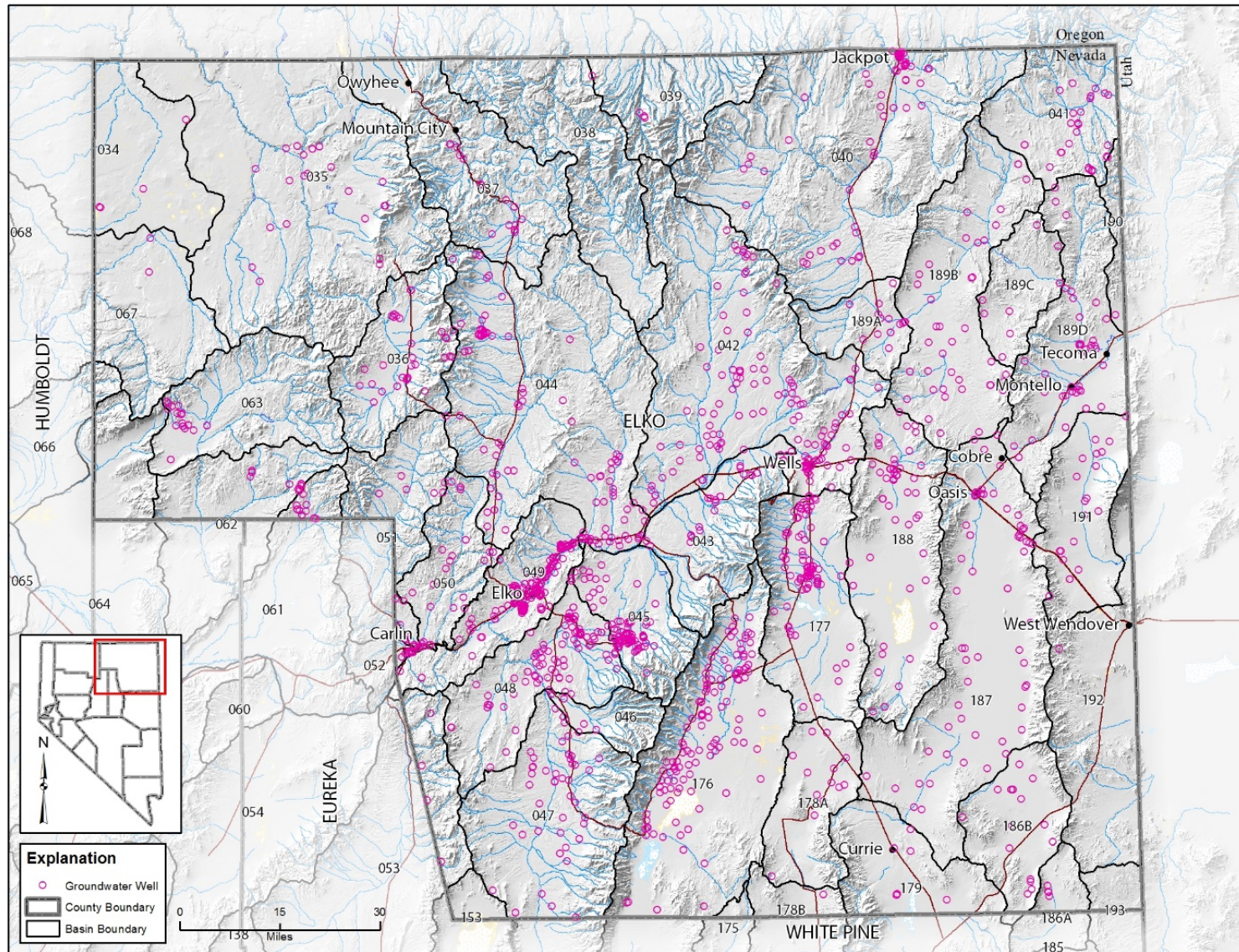


Figure 6. Groundwater wells in Elko County.

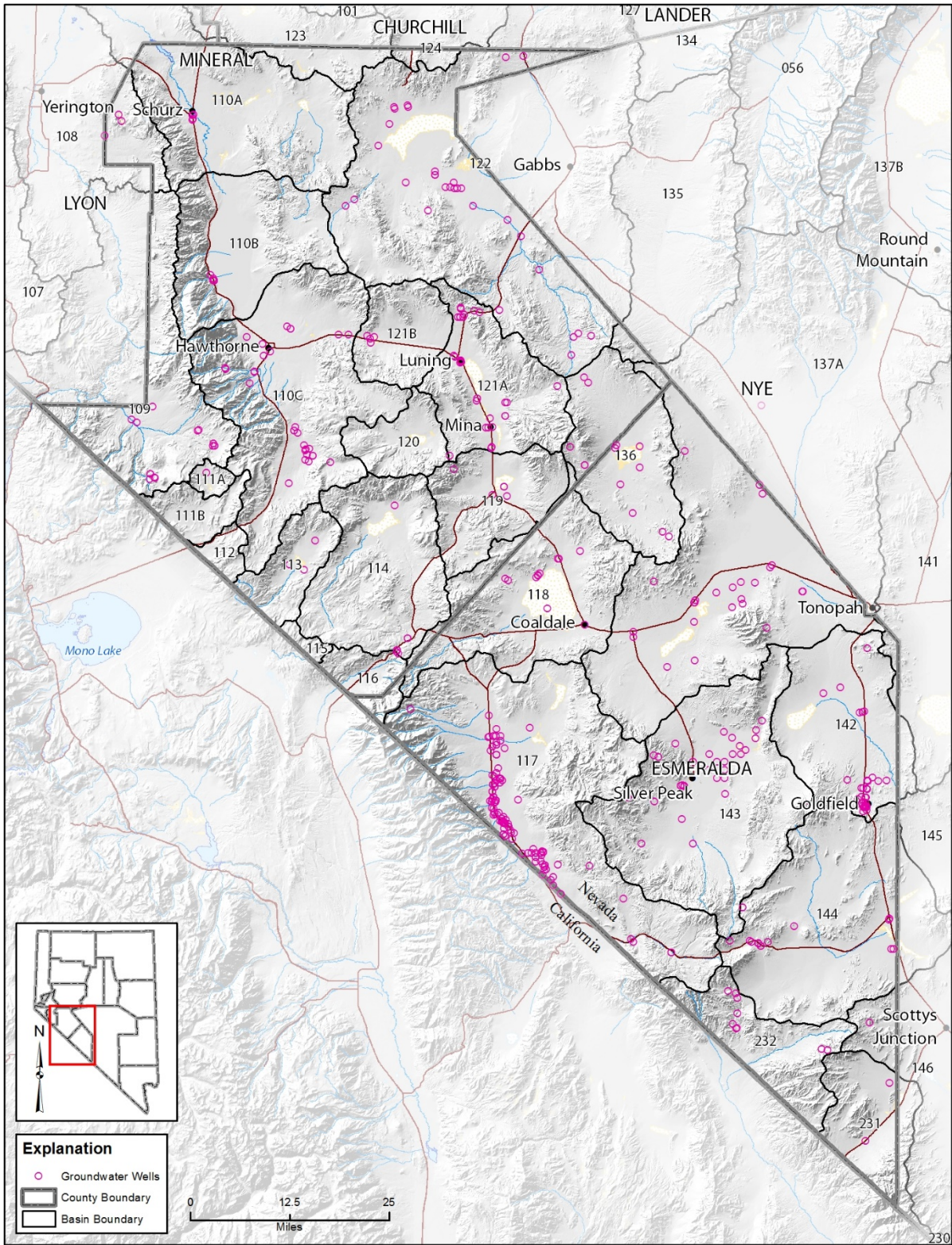


Figure 7. Groundwater wells in Esmeralda and Mineral Counties.

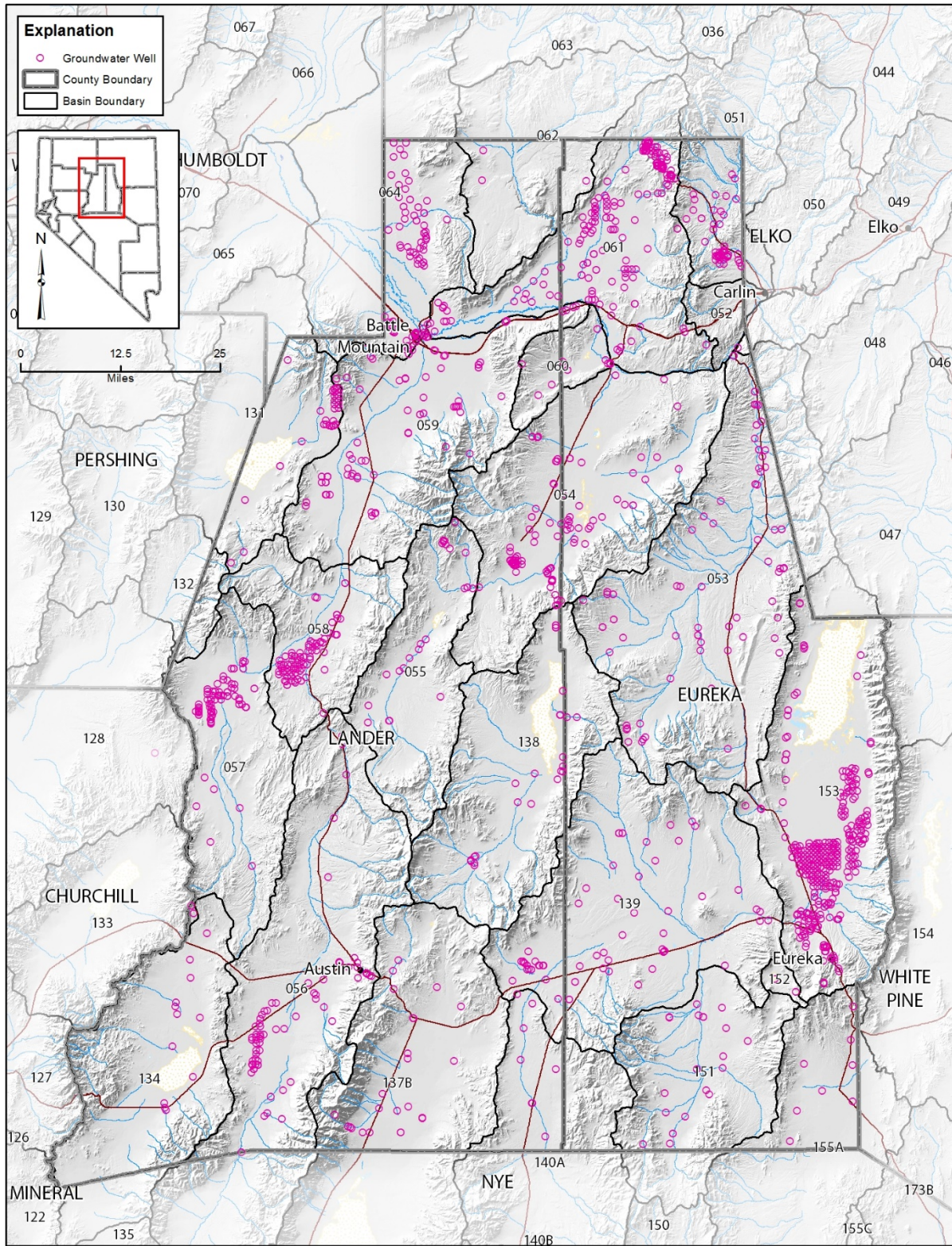


Figure 8. Groundwater wells in Eureka and Lander Counties.

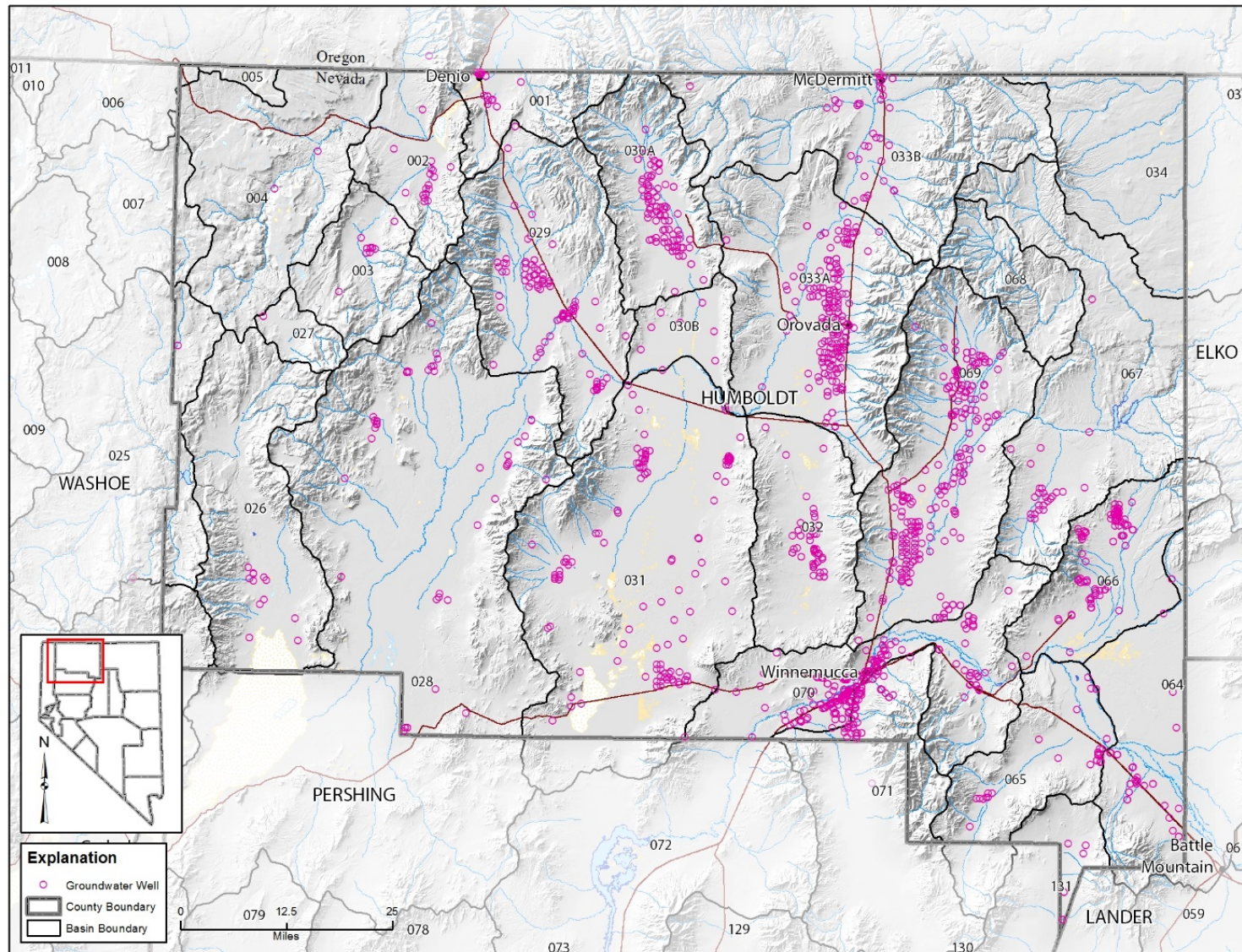


Figure 9. Groundwater wells in Humboldt County.

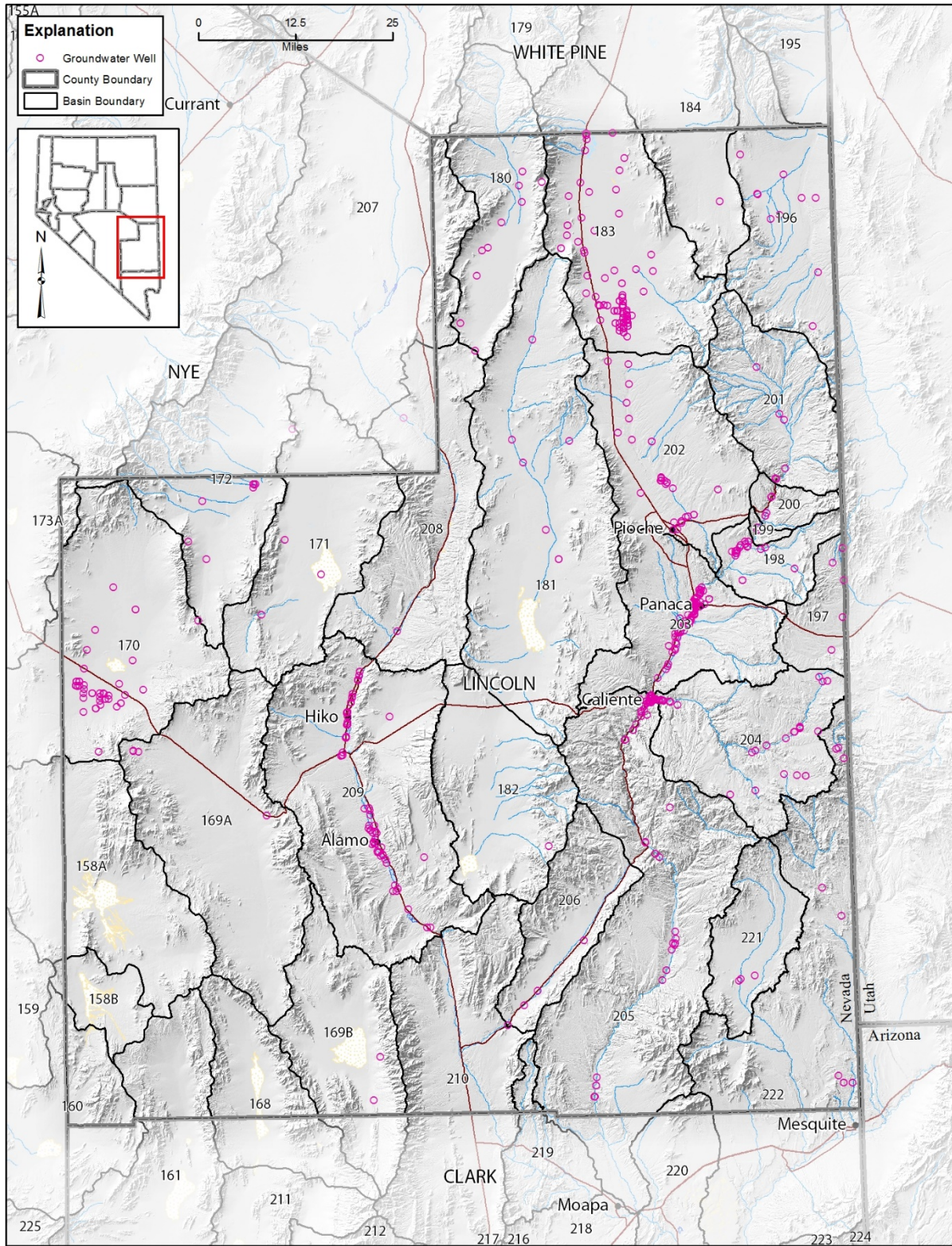


Figure 10. Groundwater wells in Lincoln County.

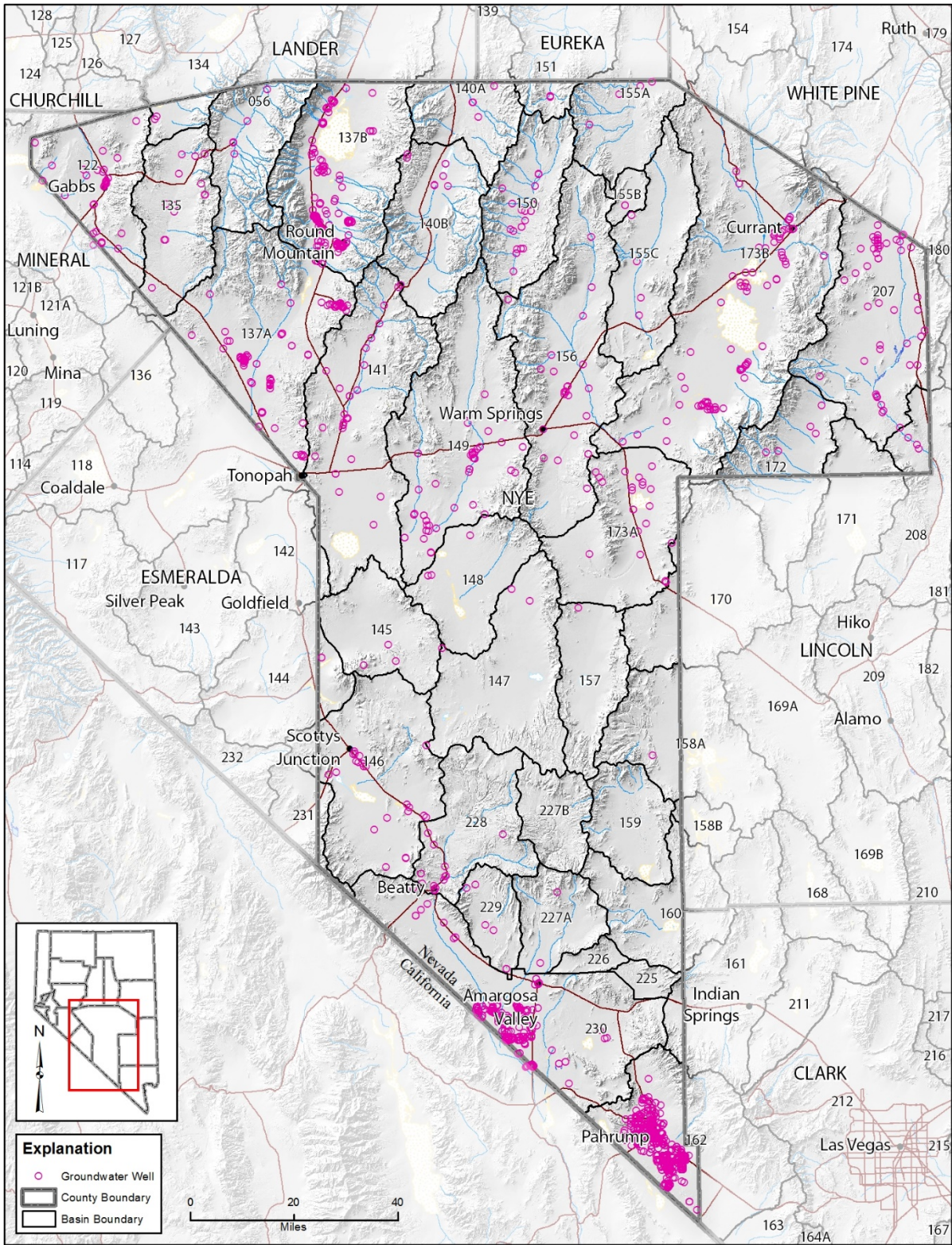


Figure 11. Groundwater wells in Nye County.

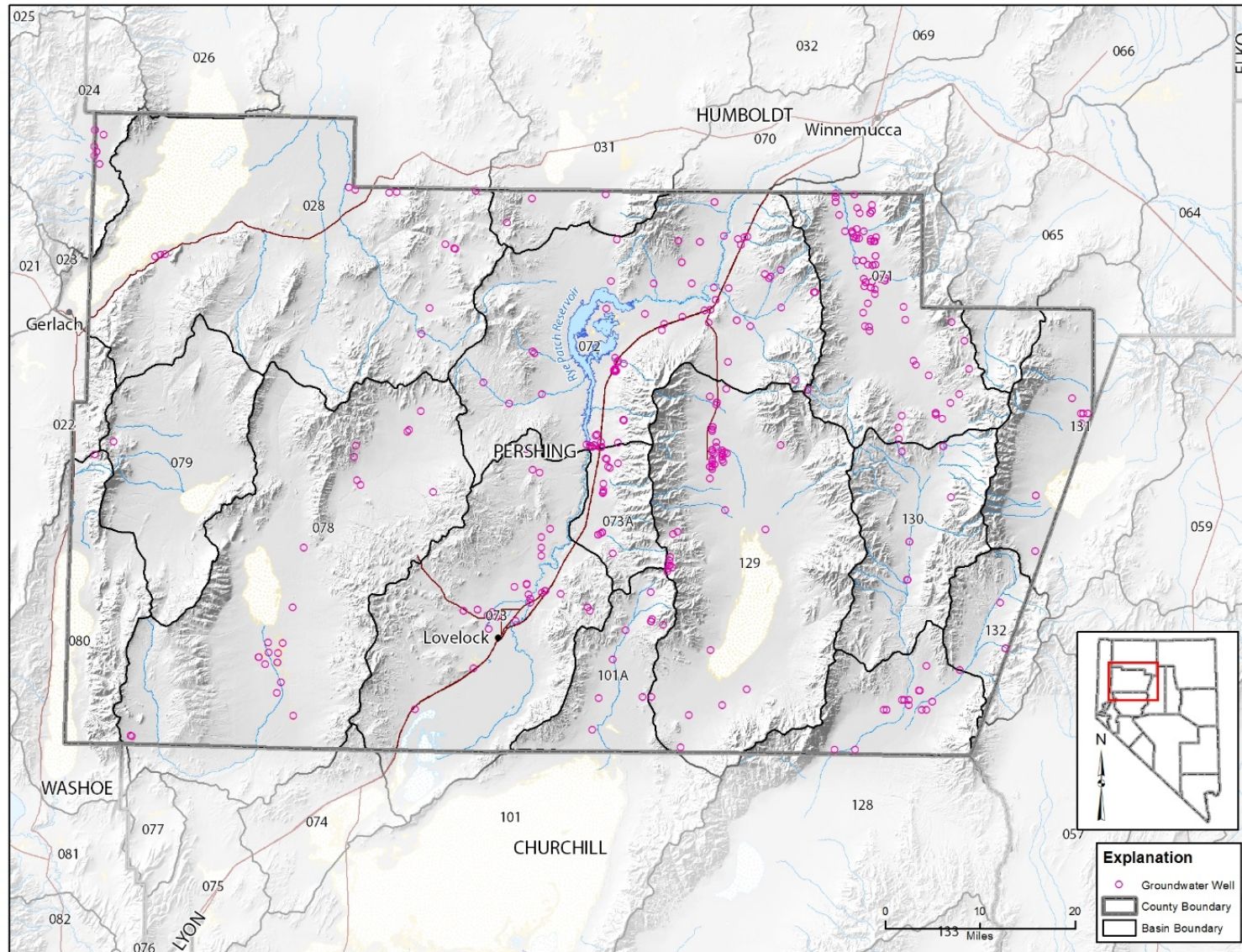


Figure 12. Groundwater wells in Pershing County.

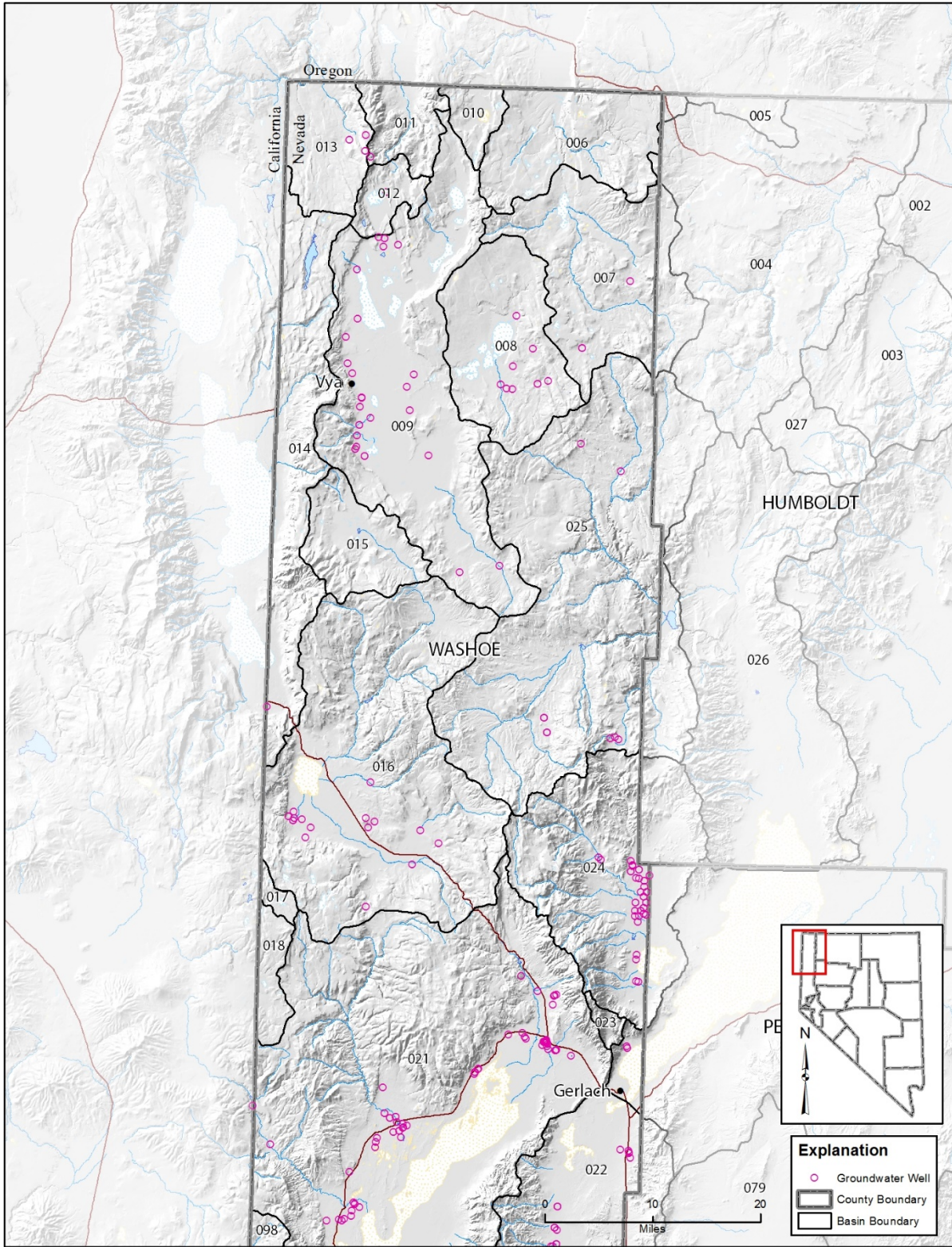


Figure 13. Groundwater wells in northern Washoe County.

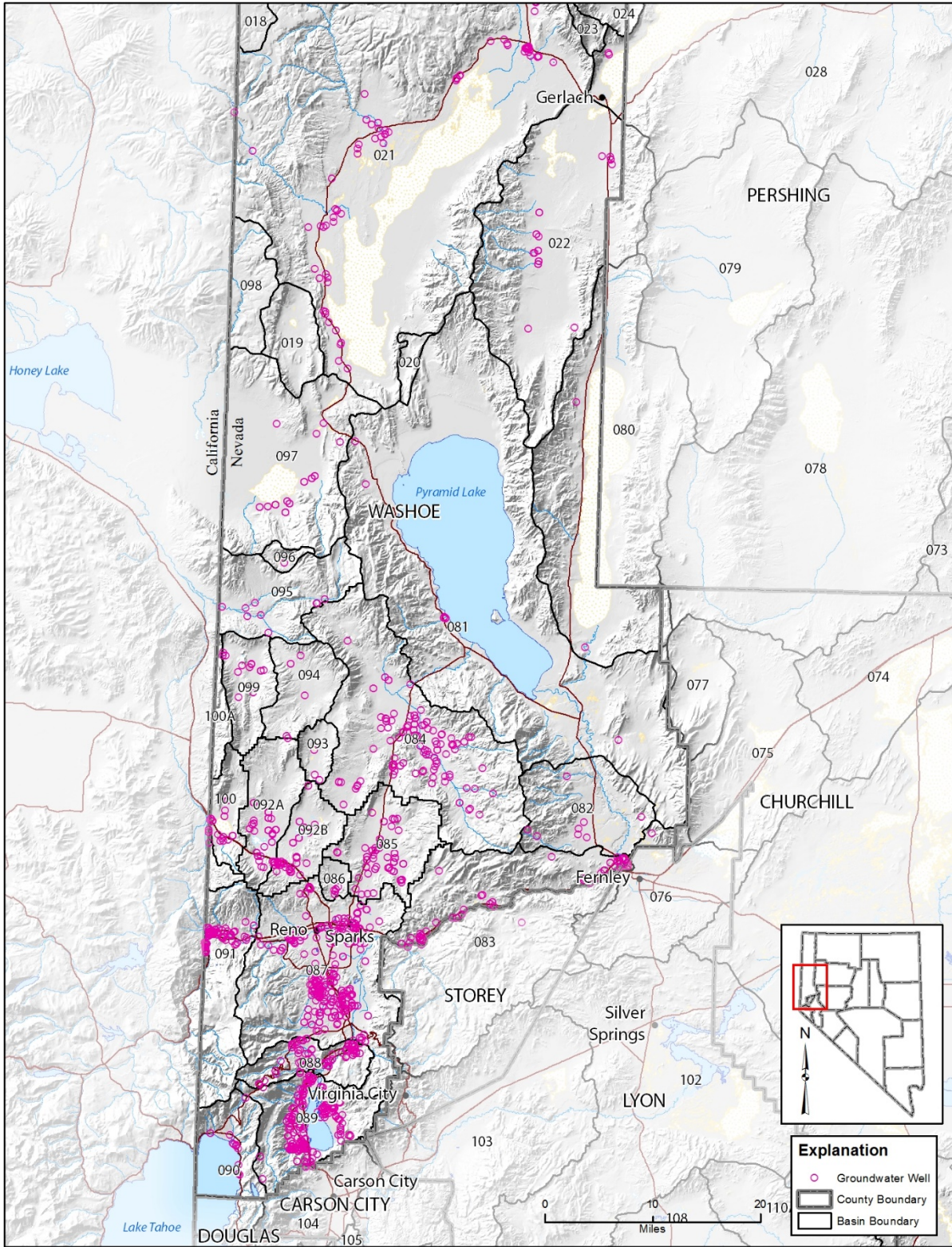


Figure 14. Groundwater wells in southern Washoe County.

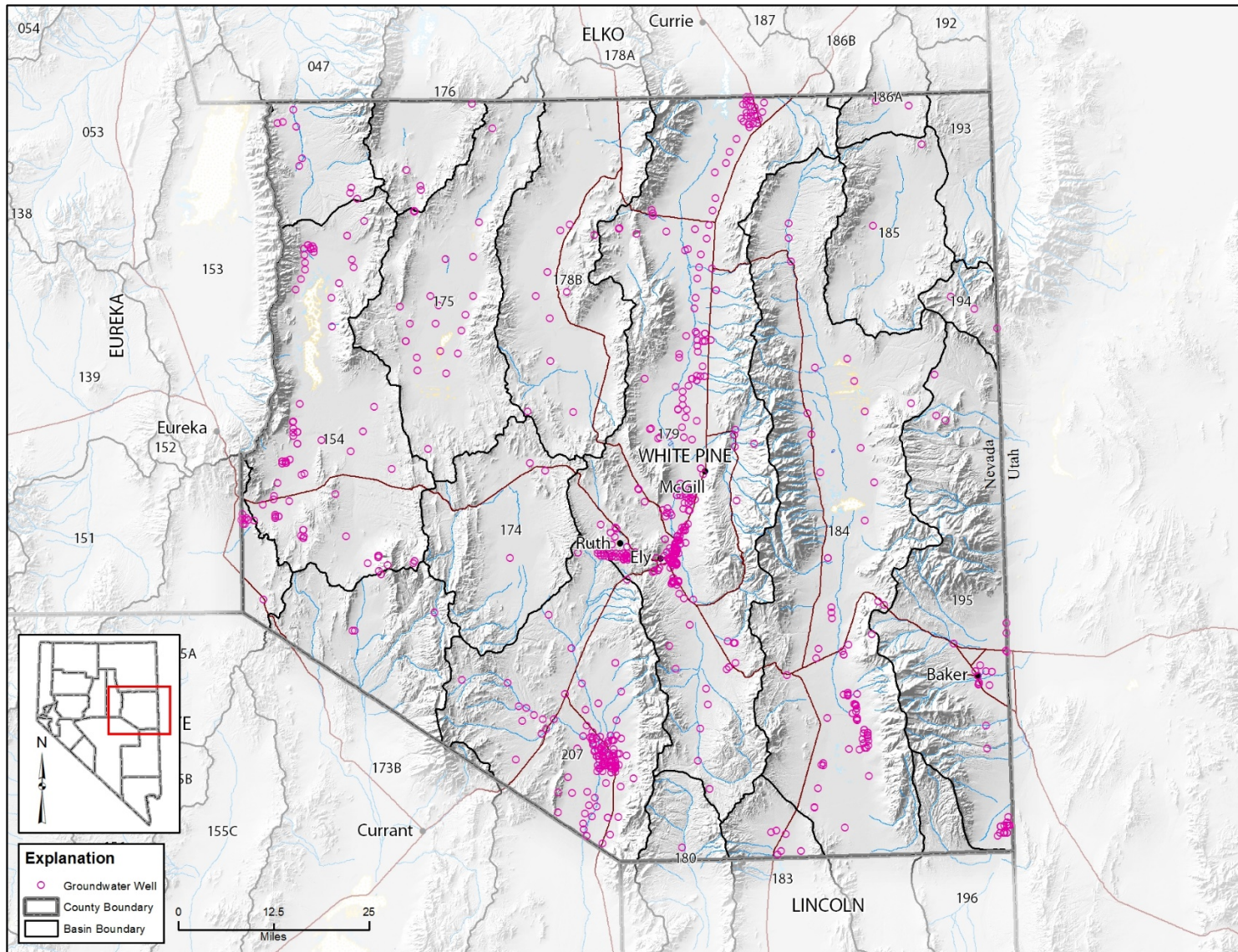


Figure 15. Groundwater wells in White Pine County.

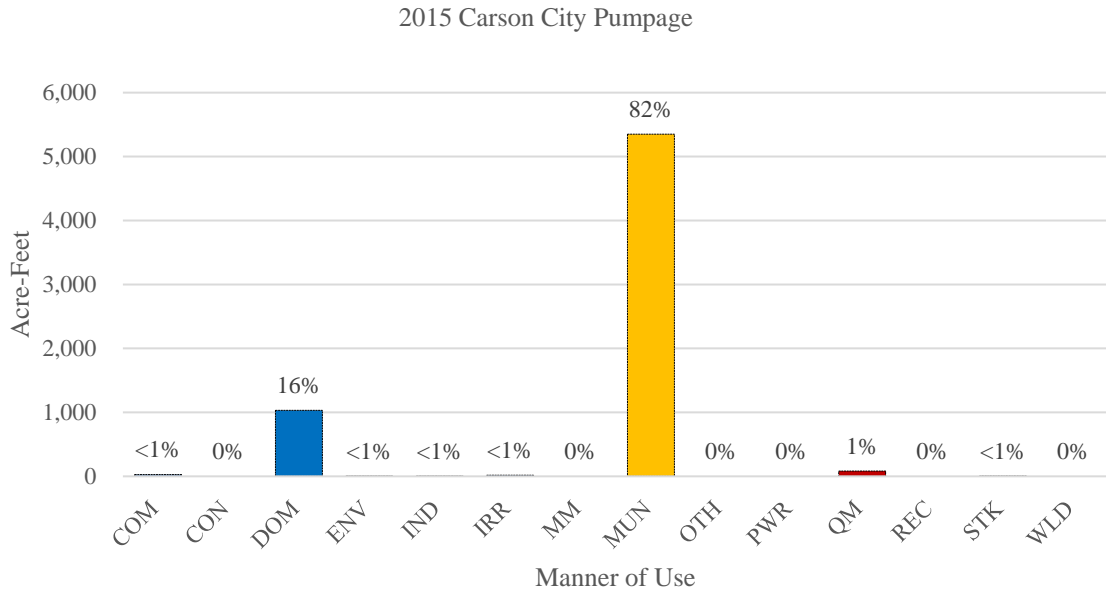


Figure 16. Carson City pumpage by manner of use.

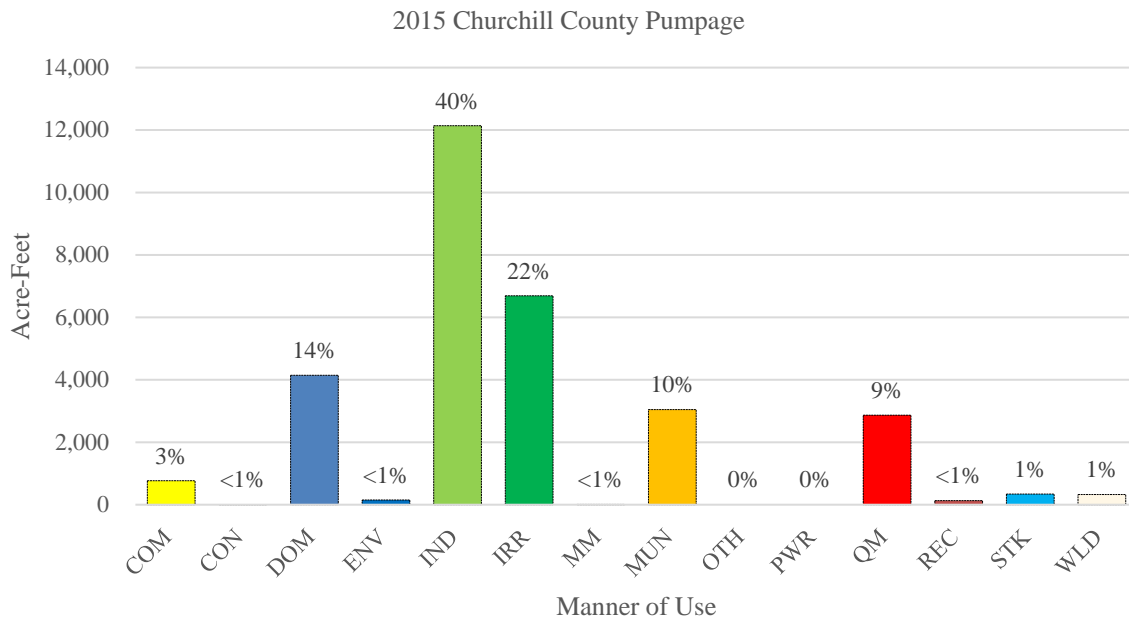


Figure 17. Churchill County pumpage by manner of use.

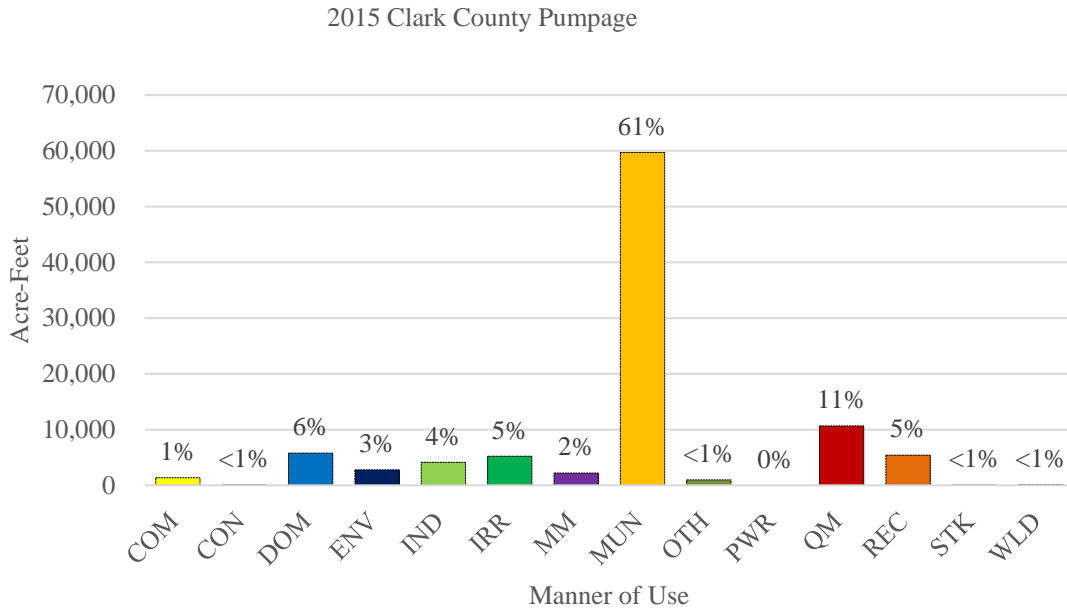


Figure 18. Clark County pumpage by manner of use.

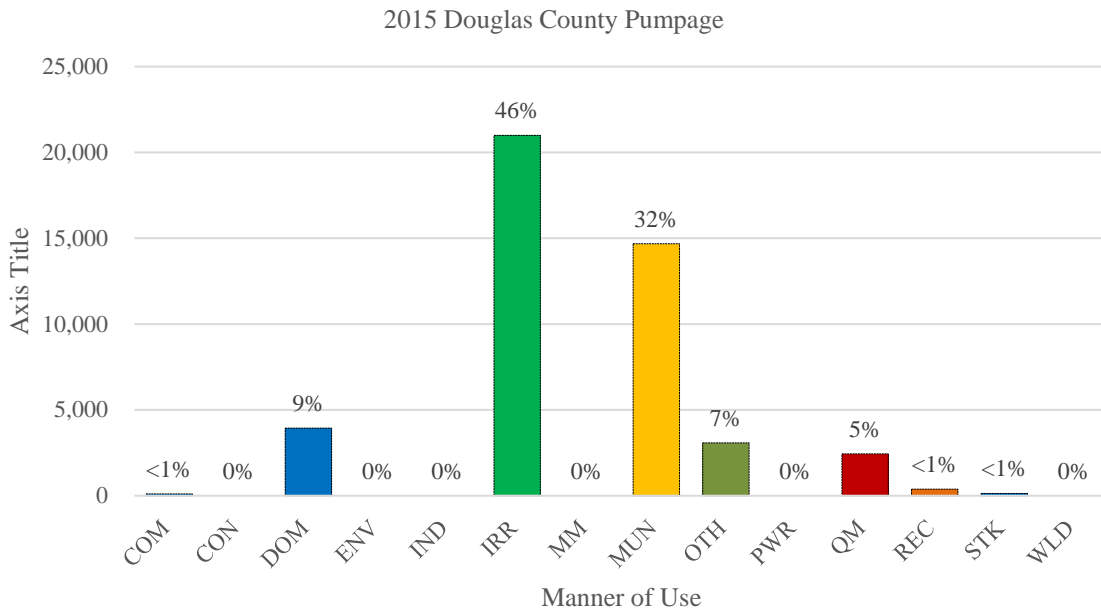


Figure 19. Douglas County pumpage by manner of use.

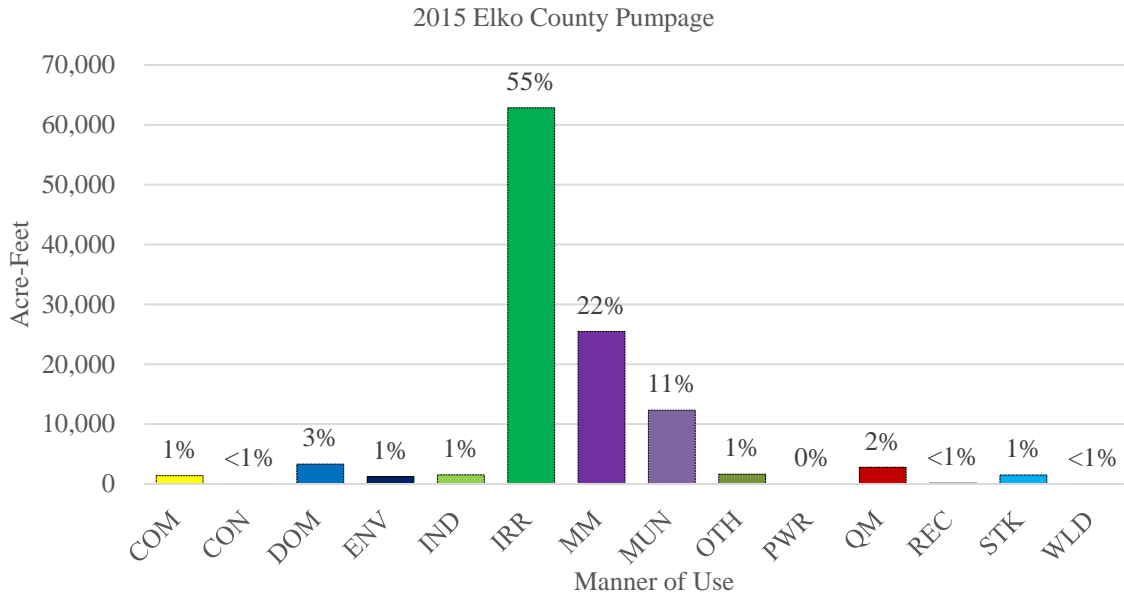


Figure 20. Elko County pumpage by manner of use.

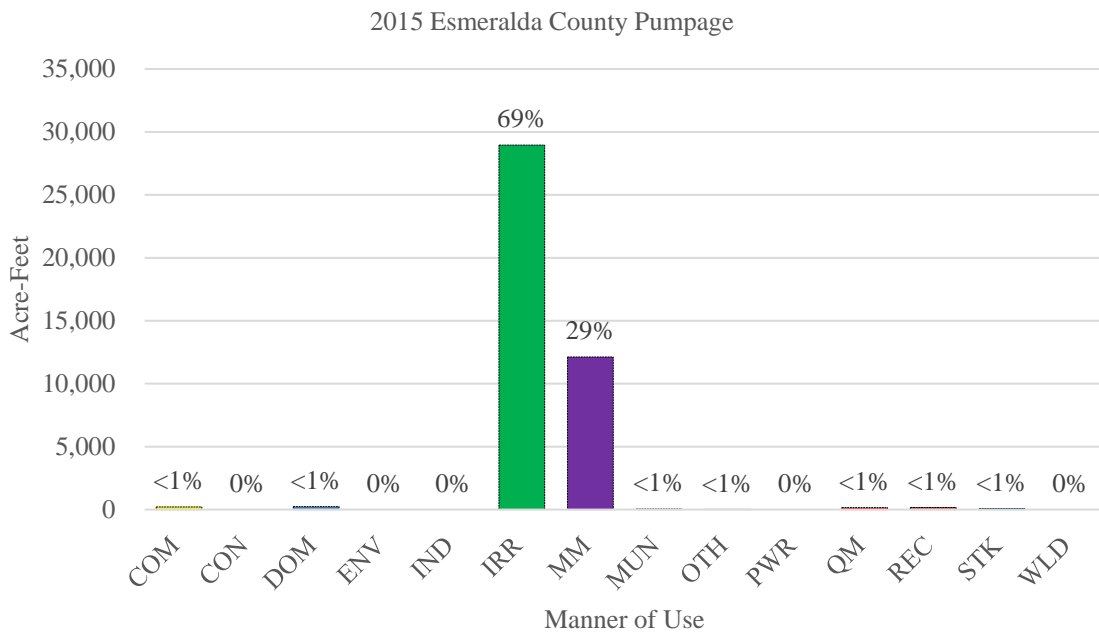


Figure 21. Esmeralda County pumpage by manner of use.

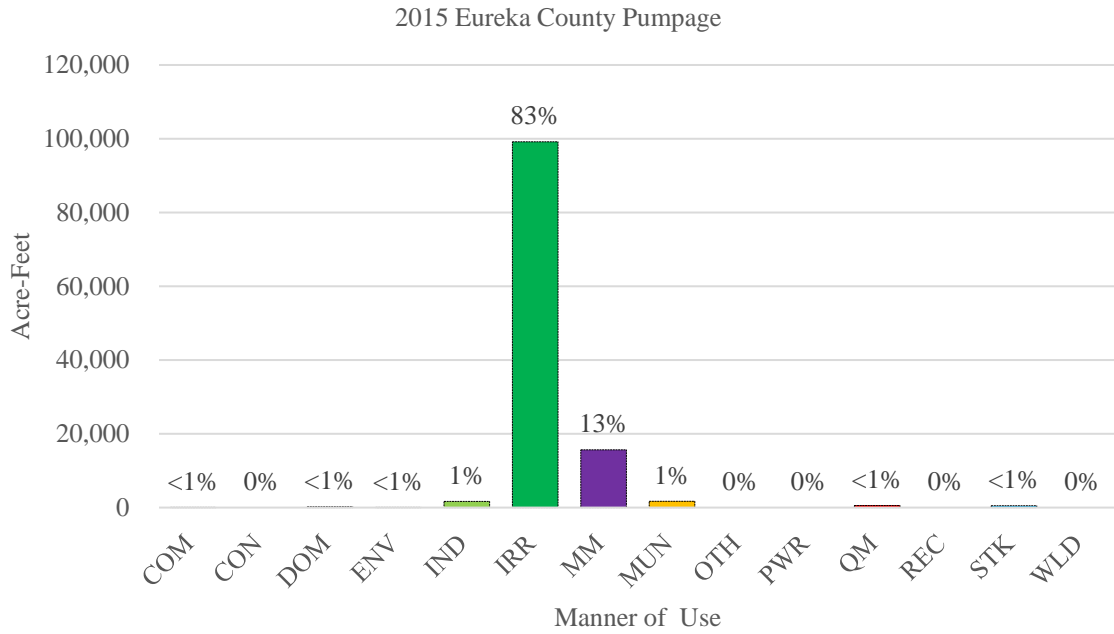


Figure 22. Eureka County pumpage by manner of use.

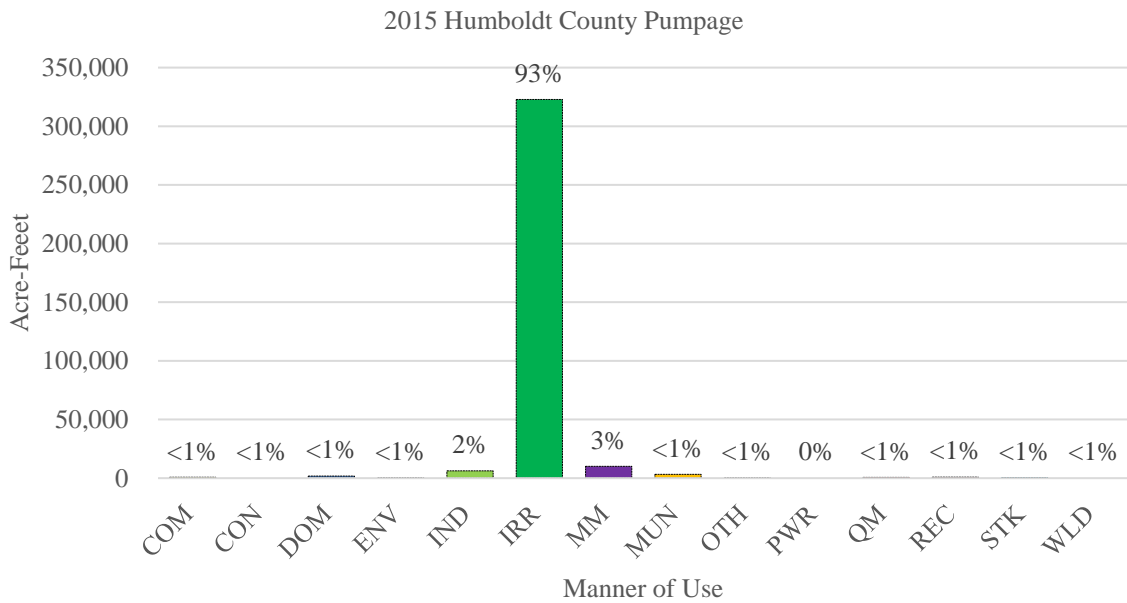


Figure 23. Humboldt County pumpage by manner of use.

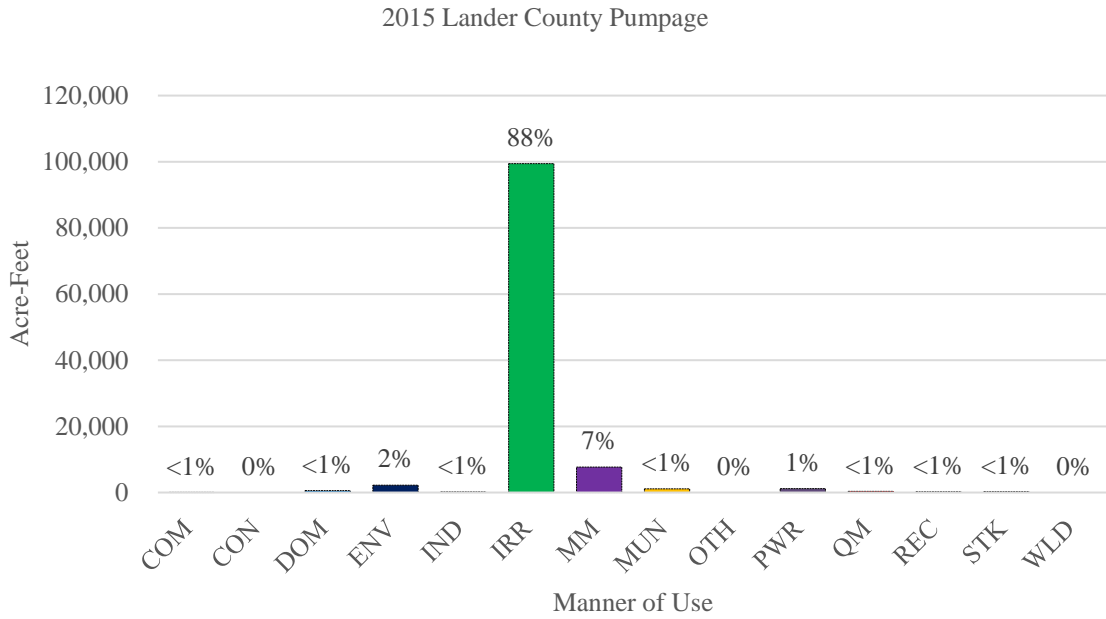


Figure 24. Lander County pumpage by manner of use.

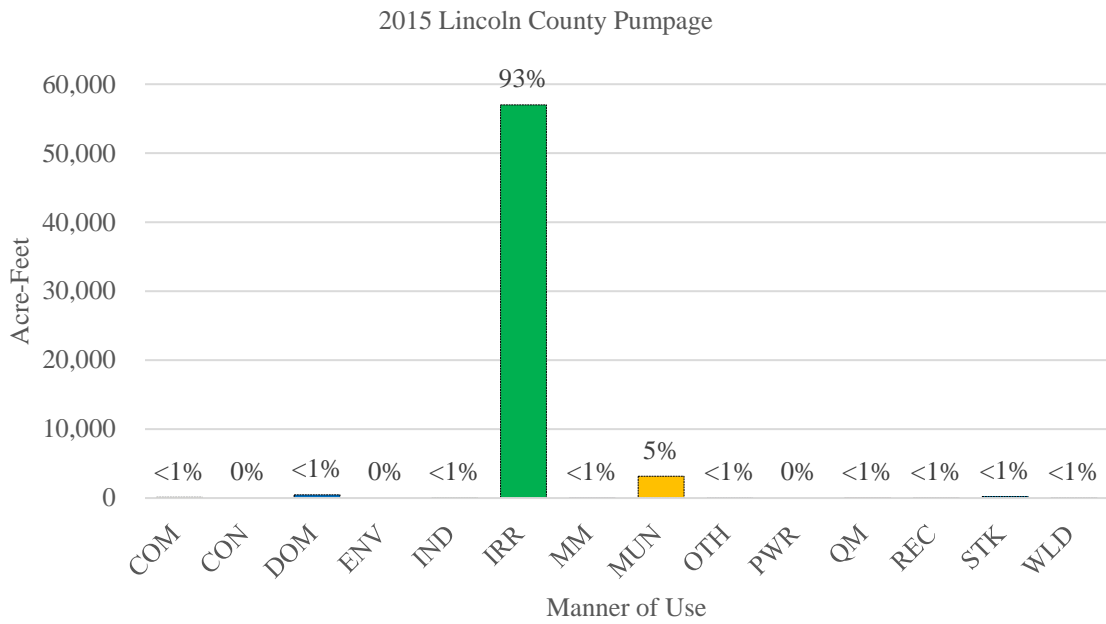


Figure 25. Lincoln County pumpage by manner of use.

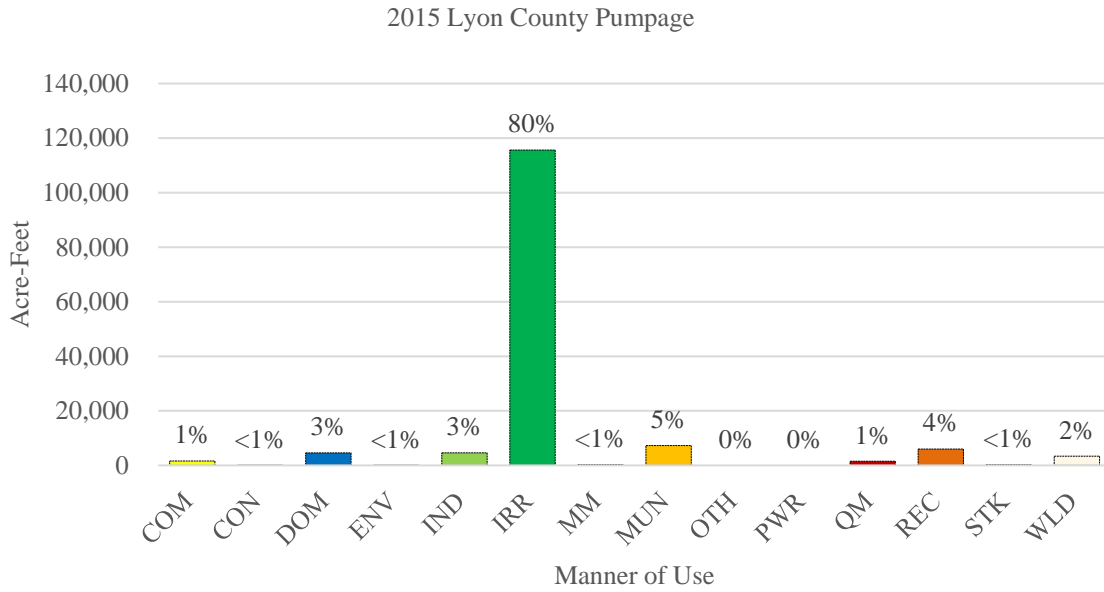


Figure 26. Lyon County pumpage by manner of use.

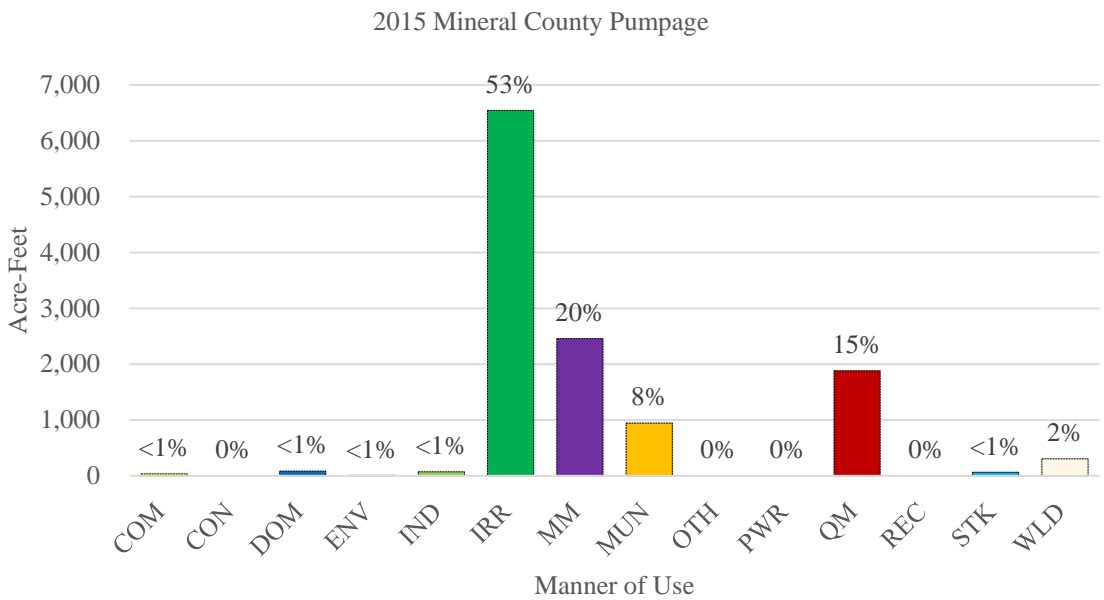


Figure 27. Mineral County pumpage by manner of use.

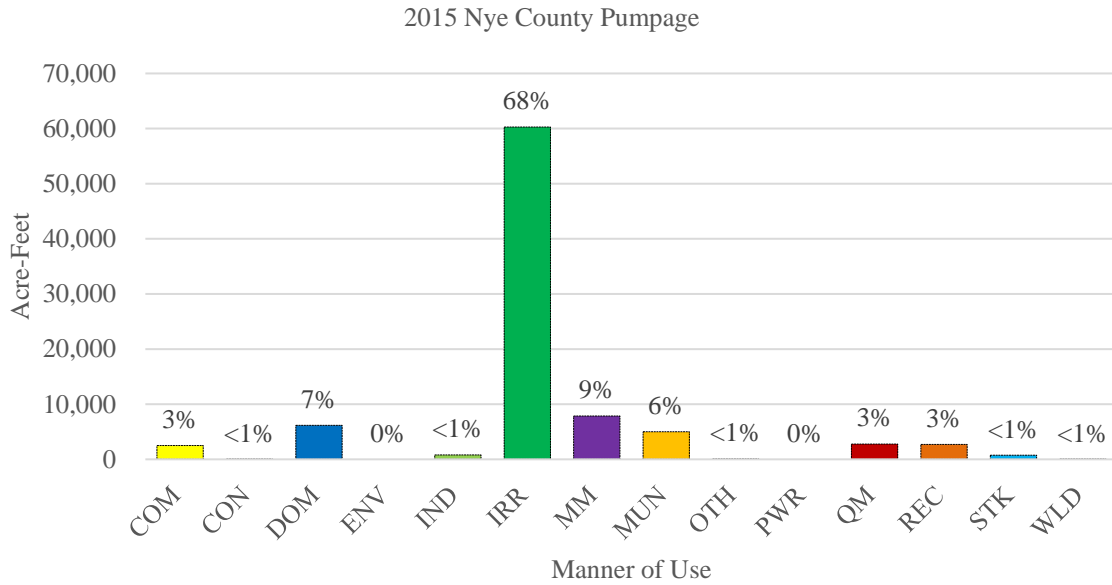


Figure 28. Nye County pumpage by manner of use.

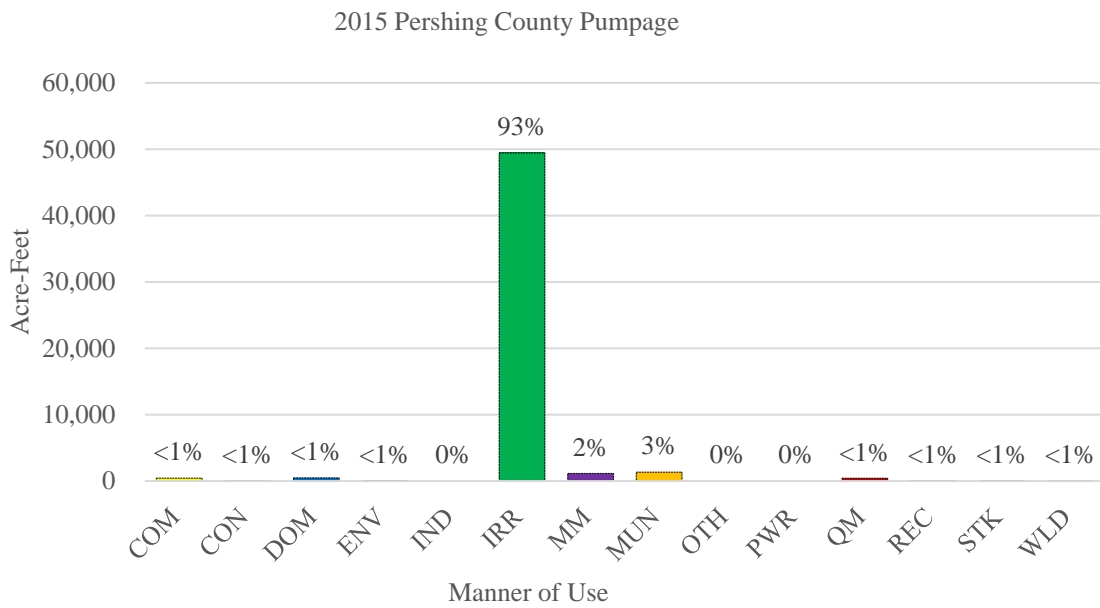


Figure 29. Pershing County pumpage by manner of use.

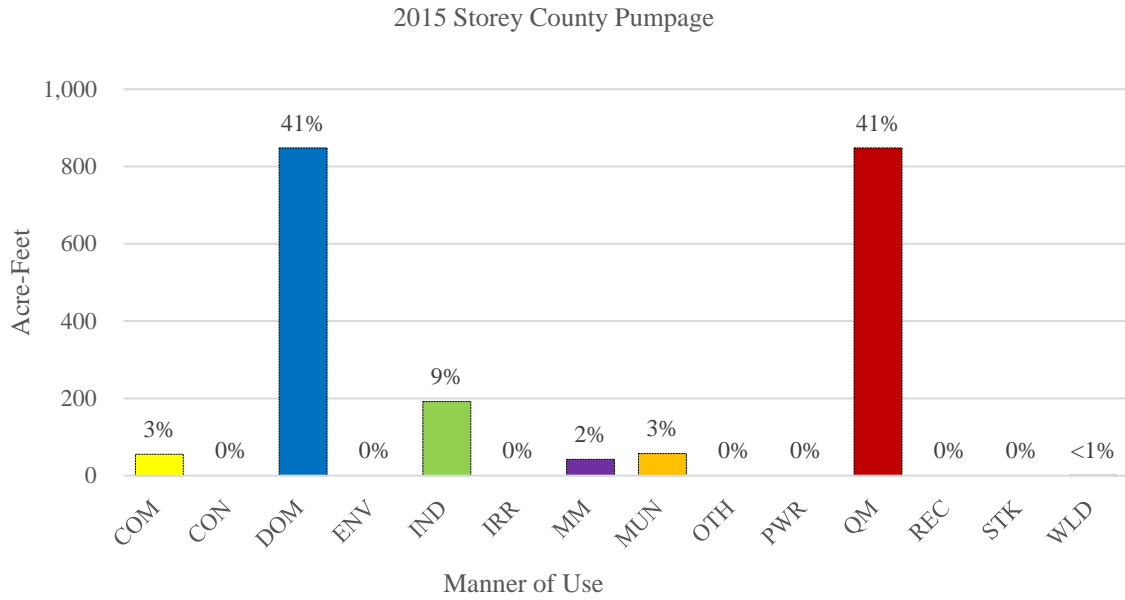


Figure 30. Storey County pumpage by manner of use.

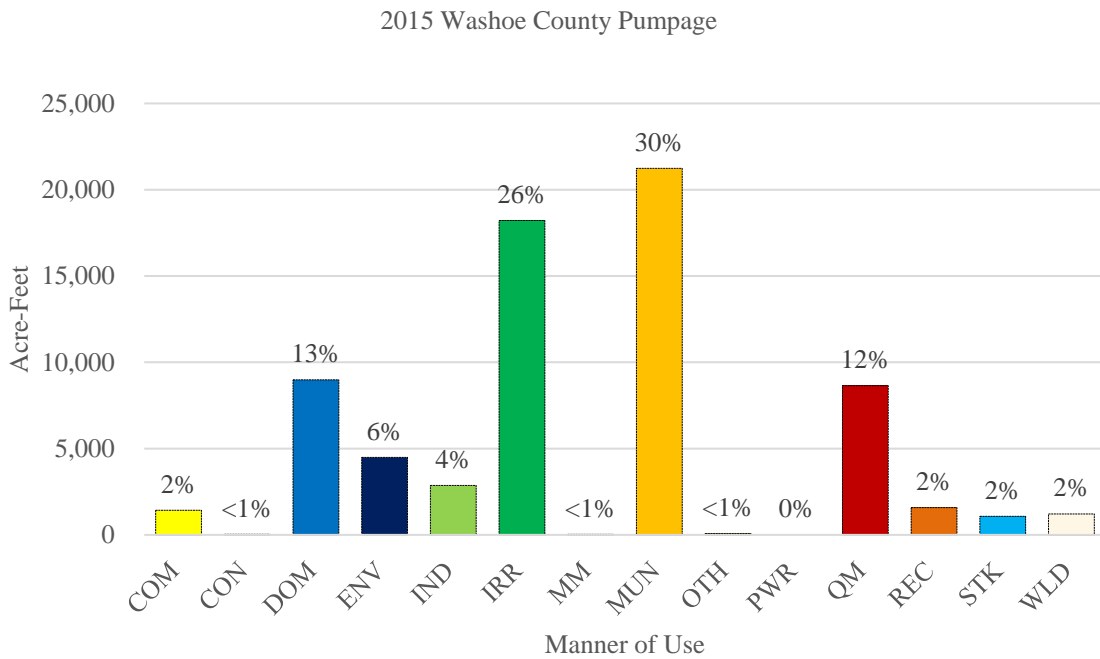


Figure 31. Washoe County pumpage by manner of use.

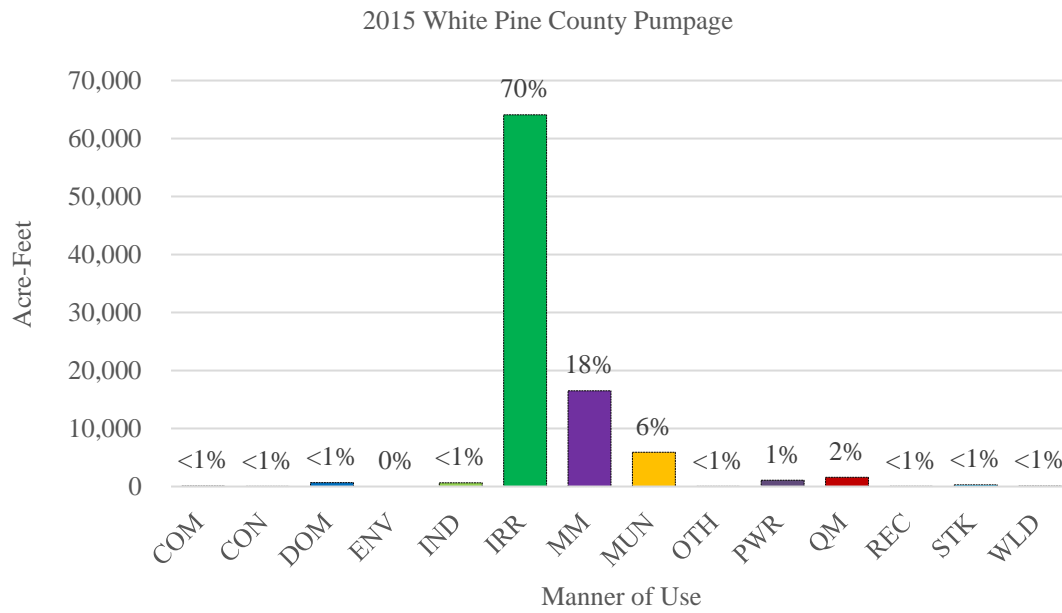


Figure 32. White Pine County pumpage by manner of use.

APPENDIX A. GROUNDWATER PUMPAGE BY BASIN AND MANNER OF USE.

Explanation of Column Headings for Groundwater Pumpage by Basin and Manner of Use

Basin Number	Assigned administrative groundwater basin number
Sub	Identifier for a basin subarea
Basin Name	Assigned administrative groundwater basin name
County	Name of county in which the groundwater basin is located
Inventory Type	Inventory type, if 2015 crop (C) or pumpage (P) inventory was conducted; blank if no inventory was conducted

Manner of Use

COM	Commercial
CON	Construction
DOM	Domestic
ENV	Environmental
IND	Industrial
IRR	Irrigation
MM	Mining and Milling
MUN	Municipal
OTH	Other
PWR	Power
QM	Quasi-Municipal
REC	Recreation
STK	Stock
WLD	Wildlife

Basin Number	Sub	Basin Name	County	Inventory Type	COM	CON	DOM	ENV	IND	IRR	MM	MUN	OTH	PWR	QM	REC	STK	WLD	Total
001		Pueblo Valley	Humboldt	C	11	0	20	0	0	4,146	0	0	0	0	4	0	3	0	4,184
002		Continental Lake Valley	Humboldt		0	0	2	0	0	2,879	0	0	0	0	0	0	19	0	2,900
003		Gridley Lake Valley	Humboldt		0	0	0	0	0	4,218	0	0	0	0	0	0	84	0	4,302
004		Virgin Valley	Humboldt		0	0	10	0	0	0	0	0	0	0	7	0	0	0	17
005		Sage Hen Valley	Humboldt		0	0	0	0	0	0	0	0	0	0	0	0	0	0	0
006		Guano Valley	Humboldt		0	0	0	0	0	0	0	0	0	0	0	0	0	0	0
006		Guano Valley	Washoe		0	0	0	0	0	0	0	0	0	0	0	0	0	0	0
007		Swan Lake Valley	Humboldt		0	0	0	0	0	0	0	0	0	0	0	0	0	0	0
007		Swan Lake Valley	Washoe		0	0	1	0	0	0	0	0	0	0	0	0	43	0	44
008		Massacre Lake Valley	Washoe		0	5	0	0	0	0	0	0	0	0	0	0	86	0	91
009		Long Valley	Washoe		0	0	6	0	0	1,103	0	0	0	0	0	0	136	0	1,245
010		Macy Flat	Washoe		0	0	0	0	0	0	0	0	0	0	0	0	4	0	4
011		Coleman Valley	Washoe		0	0	0	0	0	0	0	0	0	0	0	0	23	0	23
012		Mosquito Valley	Washoe		0	0	0	0	0	0	0	0	0	0	0	0	0	0	0
013		Warner Valley	Washoe		0	0	0	0	0	0	0	0	0	0	0	0	68	0	68
014		Surprise Valley	Washoe		0	0	0	0	0	463	0	0	0	0	0	0	36	0	499
015		Boulder Valley	Washoe		0	0	0	0	0	0	0	0	0	0	0	0	0	0	0
016		Duck Lake Valley	Washoe		69	0	2	0	0	1,944	0	0	0	0	0	0	63	0	2,078
017		Pilgrim Flat	Washoe		0	0	1	0	0	0	0	0	0	0	0	0	0	0	1
018		Painter Flat	Washoe		0	0	1	0	0	0	0	0	0	0	0	0	0	0	1
019		Dry Valley	Washoe		0	0	1	0	0	0	0	0	0	0	0	0	0	0	1
020		Sano Valley	Washoe		0	0	0	0	0	0	0	0	0	0	0	0	0	0	0
021		Smoke Creek Valley	Washoe		8	0	12	0	0	1,966	0	0	0	0	0	0	84	449	2,520
022		San Emidio Desert	Washoe		0	0	7	0	1,342	4,077	31	0	0	0	86	0	1	0	5,544
023		Granite Basin	Washoe		0	0	0	0	0	0	0	0	0	0	0	0	0	0	0
024		Hualapai Flat	Washoe	C	4	0	4	0	0	1,592	0	0	0	0	4	0	3	0	1,608
025		High Rock Lake Valley	Humboldt		0	0	0	0	0	0	0	0	0	0	0	0	1	0	1
025		High Rock Lake Valley	Washoe		0	0	2	0	0	0	0	0	0	0	0	0	2	0	4
026		Mud Meadow	Humboldt		0	0	0	0	0	2,197	0	0	0	0	0	0	0	0	2,197
027		Summit Lake Valley	Humboldt		0	0	1	0	0	0	0	0	0	0	0	0	1	0	2
028		Black Rock Desert	Humboldt		0	0	9	0	0	9,931	2,371	0	0	0	6	0	15	0	12,332
028		Black Rock Desert	Pershing		0	0	2	0	0	0	0	0	0	0	0	0	0	0	2
028		Black Rock Desert	Washoe		0	0	1	0	0	0	0	0	0	0	0	0	0	0	1
029		Pine Forest Valley	Humboldt	C	4	0	17	0	0	22,326	0	0	0	0	6	0	19	0	22,373
030	A	Kings River Valley - Rio King Subarea	Humboldt	C	112	0	18	0	0	50,373	0	0	94	0	1	0	26	0	50,624
030	B	Kings River Valley - Sod House Subarea	Humboldt		0	0	1	0	0	232	0	0	0	0	0	0	5	0	238
031		Desert Valley	Humboldt	C	2	0	11	0	2,872	26,216	6	0	65	0	2	772	13	0	29,959
031		Desert Valley	Pershing	C	0	0	2	0	0	0	0	0	0	0	0	0	2	0	4
032		Silver State Valley	Humboldt	C	0	0	15	0	0	18,378	0	0	0	0	2	0	18	0	18,413
033	A	Quinn River Valley - Orovada Subarea	Humboldt	C	80	0	51	0	0	62,038	0	3	0	0	0	0	18	0	62,190
033	B	Quinn River Valley - McDermitt Subarea	Humboldt	C	0	0	42	0	0	3,124	0	59	0	0	47	0	20	0	3,292

Basin Number	Sub	Basin Name	County	Inventory Type	COM	CON	DOM	ENV	IND	IRR	MM	MUN	OTH	PWR	QM	REC	STK	WLD	Total
034		Little Owyhee River Area	Elko		0	0	2	0	0	0	0	0	0	0	0	0	6	0	8
035		South Fork Owyhee River	Elko		0	0	6	0	0	1,270	0	0	0	0	7	0	99	0	1,382
036		Independence Valley	Elko		0	0	19	0	1,399	3,006	132	18	0	0	2	0	20	0	4,596
037		Owyhee River Area	Elko		0	0	90	0	0	0	0	0	113	0	26	4	2	0	235
038		Bruneau River Area	Elko		0	0	2	0	0	0	0	0	0	0	0	0	3	0	5
039		Jarbidge River Area	Elko		0	0	0	0	0	0	0	0	0	0	0	0	0	0	0
040		Salmon Falls Creek Area	Elko		745	0	21	0	0	3,957	0	208	40	0	352	0	74	0	5,397
041		Goose Creek Area	Elko		0	0	1	0	0	769	0	0	0	0	0	0	53	0	823
042		Marys River Area	Elko		208	0	154	0	0	9,463	0	588	1,448	0	15	0	220	9	12,105
043		Starr Valley	Elko		0	0	59	0	0	2,298	0	0	0	0	0	0	77	0	2,434
044		North Fork Area	Elko		3	0	416	482	93	4,692	1,076	0	0	0	67	0	145	0	6,973
045		Lamoille Valley	Elko		17	0	347	0	0	2,117	0	0	0	0	69	0	50	0	2,600
046		South Fork Area	Elko		0	0	45	0	0	0	0	0	0	0	7	0	14	0	66
047		Huntington Valley	Elko		243	0	51	0	0	1,552	99	0	18	0	0	0	61	19	2,044
048		Dixie Creek - Ten Mile Creek Area	Elko	C	86	3	521	0	7	435	463	2,251	12	0	6	101	60	0	3,946
049		Elko Segment	Elko	C	36	0	1,164	22	21	189	1	6,965	0	0	348	45	40	0	8,831
050		Susie Creek Area	Elko		0	0	20	0	2	189	0	0	0	0	26	0	60	0	298
051		Maggie Creek Area	Elko		0	0	12	0	0	777	22,711	0	0	0	0	0	61	0	23,561
051		Maggie Creek Area	Eureka		0	0	1	0	0	0	0	0	0	0	0	0	0	0	1
052		Marys Creek Area	Elko		0	0	13	724	0	105	0	281	0	0	0	0	3	0	1,126
052		Marys Creek Area	Eureka		0	0	4	0	0	0	0	0	0	0	0	0	0	0	4
053		Pine Valley	Elko		0	0	4	0	0	0	0	0	0	0	0	0	0	0	4
053		Pine Valley	Eureka		0	0	17	0	0	8,408	71	0	0	0	39	0	63	0	8,598
054		Crescent Valley	Eureka	C	0	0	62	0	0	0	0	164	0	0	0	0	79	0	305
054		Crescent Valley	Lander	C	0	0	15	0	0	4,373	3,583	0	0	0	0	0	35	0	8,006
055		Carico Lake Valley	Lander		0	0	4	0	0	1,234	135	0	0	0	0	0	24	0	1,397
056		Upper Reese River Valley	Lander	C	0	0	22	0	0	11,528	0	44	0	0	299	0	30	0	11,923
056		Upper Reese River Valley	Nye	C	0	0	41	0	0	578	0	0	0	0	200	0	3	0	822
057		Antelope Valley	Lander	C	0	0	8	0	0	23,466	0	0	0	0	5	0	22	0	23,501
058		Middle Reese River Valley	Lander	C	0	0	12	0	0	28,852	0	0	0	0	0	0	16	0	28,880
059		Lower Reese River Valley	Eureka	C	1	0	1	0	0	0	0	0	0	0	2	0	0	0	4
059		Lower Reese River Valley	Lander	C	0	0	334	0	0	12,569	386	1,067	0	0	16	0	33	0	14,405
060		Whirlwind Valley	Eureka		0	0	1	0	0	0	0	0	0	0	0	0	3	0	4
060		Whirlwind Valley	Lander		0	0	1	0	70	0	0	0	0	1,177	0	0	1	0	1,249
061		Boulder Flat	Elko		0	0	3	0	0	0	132	0	0	0	0	0	1	0	136
061		Boulder Flat	Eureka		9	0	10	17	1,669	15,401	14,563	0	0	0	9	0	90	0	31,768
061		Boulder Flat	Lander		0	0	5	0	136	582	0	0	0	0	0	0	52	0	775
062		Rock Creek Valley	Elko		0	0	1	0	0	0	428	0	0	0	0	0	5	0	434
062		Rock Creek Valley	Lander		0	0	1	0	0	0	0	0	0	0	0	0	0	0	1
063		Willow Creek Valley	Elko		0	0	5	0	0	1,944	406	0	0	0	56	0	5	0	2,416
064		Clovers Area	Elko	C	0	0	1	0	0	0	0	0	0	0	0	0	0	0	1

Basin Number	Sub	Basin Name	County	Inventory Type	COM	CON	DOM	ENV	IND	IRR	MM	MUN	OTH	PWR	QM	REC	STK	WLD	Total
064		Clovers Area	Humboldt	C	0	0	19	0	753	0	1,193	0	0	0	21	0	28	0	2,014
064		Clovers Area	Lander	C	0	0	140	89	0	9,050	266	0	0	0	0	248	1	0	9,794
065		Pumpnickel Valley	Humboldt	C	0	0	4	0	0	2,097	241	0	0	0	0	0	1	0	2,343
065		Pumpnickel Valley	Pershing	C	0	0	0	0	0	0	0	0	0	0	0	0	0	0	0
066		Kelley Creek Area	Humboldt	C	0	0	7	217	18	6,598	6,279	0	0	0	0	0	0	0	13,119
067		Little Humboldt Valley	Elko	C	0	0	1	0	0	0	0	0	0	0	0	0	0	0	1
067		Little Humboldt Valley	Humboldt	C	0	0	3	0	0	7,237	0	0	0	0	0	0	1	0	7,241
068		Hardscrabble Area	Humboldt		0	0	0	0	0	0	0	0	0	0	0	0	0	0	0
069		Paradise Valley	Humboldt	C	240	0	388	0	10	66,897	0	0	11	0	14	3	6	0	67,569
070		Winnemucca Segment	Humboldt	C	283	0	704	24	1,459	27,552	0	889	13	0	533	64	1	0	31,522
071		Grass Valley	Humboldt	C	31	0	519	0	1,122	6,390	0	2,308	0	0	9	0	0	0	10,379
071		Grass Valley	Pershing	C	0	0	219	0	0	20,416	0	0	0	0	241	0	1	0	20,877
072		Imlay Area	Pershing		120	8	82	8	0	1,841	430	0	0	0	5	0	1	0	2,494
073		Lovelock Valley	Churchill		0	0	1	0	0	0	0	0	0	0	0	0	0	0	1
073		Lovelock Valley	Pershing		273	0	53	0	0	4,382	49	19	0	0	0	2	10	0	4,788
073	A	Lovelock Valley - Oreana Subarea	Pershing		38	0	73	0	0	303	0	1,324	0	0	184	3	0	0	1,925
074		White Plains	Churchill		43	0	3	0	0	0	0	0	0	0	8	0	0	0	54
075		Brady Hot Springs	Churchill		0	0	0	0	21	0	8	0	0	0	0	0	2	0	31
075		Brady Hot Springs	Lyon		0	0	2	0	0	0	0	0	0	0	0	0	0	0	2
076		Fernley Area	Churchill		0	0	16	0	0	0	0	0	0	0	0	0	0	0	16
076		Fernley Area	Lyon		26	0	472	0	1,210	389	0	3,770	0	0	0	0	3	0	5,869
076		Fernley Area	Washoe		0	0	22	0	0	0	0	0	0	0	0	0	0	0	22
077		Fireball Valley	Churchill		0	0	0	0	0	0	0	0	0	0	0	0	0	0	0
078		Granite Springs Valley	Churchill		0	0	4	0	0	0	0	0	0	0	0	0	0	0	4
078		Granite Springs Valley	Pershing		0	0	2	0	0	4,056	0	0	0	0	0	0	11	7	4,076
079		Kumiva Valley	Pershing		0	0	0	0	0	0	0	0	0	0	0	0	0	0	0
080		Winnemucca Lake Valley	Pershing		0	0	0	0	0	0	2	0	0	0	0	0	0	0	2
080		Winnemucca Lake Valley	Washoe		0	0	4	0	0	0	0	0	0	0	0	0	0	0	4
081		Pyramid Lake Valley	Churchill		0	0	1	0	0	0	0	0	0	0	0	0	0	0	1
081		Pyramid Lake Valley	Lyon		0	0	1	0	0	0	0	0	0	0	0	0	0	0	1
081		Pyramid Lake Valley	Washoe		15	0	49	0	0	0	0	0	0	0	0	0	2	0	66
082		Dodge Flat	Washoe		453	0	20	0	0	0	0	0	0	0	175	0	5	0	653
083		Tracy Segment	Lyon		0	0	15	0	0	0	0	0	0	0	0	0	0	0	15
083		Tracy Segment	Storey		55	0	611	0	192	0	0	57	0	0	846	0	0	0	1,761
083		Tracy Segment	Washoe		134	0	82	0	609	0	0	33	0	0	177	0	3	0	1,038
084		Warm Springs Area	Washoe	P	19	0	641	556	0	2,682	0	0	0	0	65	9	31	0	4,003
085		Spanish Springs Valley	Washoe		171	28	387	0	0	0	0	971	0	0	975	600	3	0	3,136
086		Sun Valley	Washoe		0	0	230	1	0	14	0	0	0	0	0	0	0	0	245
087		Truckee Meadows	Washoe	P	309	0	1,988	3,891	908	353	0	16,230	6	0	2,347	119	1	1	26,153
088		Pleasant Valley	Washoe	P	13	0	722	0	0	215	0	867	72	0	772	0	0	0	2,661
089		Washoe Valley	Washoe	P	58	0	1,573	0	0	2,202	0	1,260	2	0	83	785	431	760	7,154

Basin Number	Sub	Basin Name	County	Inventory Type	COM	CON	DOM	ENV	IND	IRR	MM	MUN	OTH	PWR	QM	REC	STK	WLD	Total
090		Lake Tahoe Basin	Carson City	P	0	0	2	0	0	0	0	357	0	0	0	0	0	0	359
090		Lake Tahoe Basin	Douglas	P	17	0	81	0	0	380	0	2,027	0	0	2,133	377	0	0	5,014
090		Lake Tahoe Basin	Washoe	P	0	0	34	0	0	4	0	0	0	0	947	29	0	0	1,014
091		Truckee Canyon Segment	Washoe		124	0	457	32	0	17	0	552	0	0	551	3	32	0	1,768
092	A	Lemmon Valley - Western Part	Washoe	P	2	0	631	0	4	6	0	0	0	0	620	24	0	0	1,287
092	B	Lemmon Valley - Eastern Part	Washoe	P	31	0	1,237	0	1	2	0	0	0	0	140	12	0	0	1,422
093		Antelope Valley	Washoe		0	0	193	0	0	0	0	0	0	0	53	0	1	0	247
094		Bedell Flat	Washoe		9	0	73	0	0	0	0	368	0	0	0	0	6	0	456
095		Dry Valley	Washoe		0	0	10	0	0	0	0	0	0	0	0	0	0	0	10
096		Newcomb Lake Valley	Washoe		0	0	0	0	0	0	0	0	0	0	0	0	0	0	0
097		Honey Lake Valley	Washoe		0	0	32	0	0	981	0	958	0	0	21	0	11	0	2,003
098		Skedaddle Creek Valley	Washoe		0	0	0	0	0	0	0	0	0	0	0	0	0	0	0
099		Red Rock Valley	Washoe		5	0	374	0	0	303	0	0	0	0	0	0	1	0	683
100		Cold Springs Valley	Washoe		1	0	169	9	0	294	0	0	0	0	1,334	0	0	0	1,807
100	A	Cold Springs Valley - Long Valley	Washoe		0	0	5	0	0	0	0	0	0	0	296	0	0	0	301
101		Carson Desert	Churchill		714	1	4,060	151	1,087	3,239	1	3,046	0	0	2,637	131	219	64	15,351
101		Carson Desert	Lyon		0	0	5	0	0	0	0	0	0	0	0	0	0	0	5
101	A	Carson Desert	Pershing		0	0	5	0	0	0	4	0	0	0	0	0	1	0	10
102		Churchill Valley	Churchill	P	0	0	27	0	0	0	0	0	0	0	0	0	0	0	27
102		Churchill Valley	Douglas	P	0	0	2	0	0	0	0	0	0	0	0	0	0	0	2
102		Churchill Valley	Lyon	P	9	0	1,319	0	5	487	0	0	0	0	471	13	1	0	2,305
102		Churchill Valley	Storey	P	0	0	5	0	0	0	0	0	0	0	0	0	0	0	5
103		Dayton Valley	Carson City	P	0	0	187	0	1	0	0	1,192	0	0	0	0	1	0	1,382
103		Dayton Valley	Lyon	P	147	1	1,084	0	270	2,793	10	2,131	0	0	720	0	0	0	7,155
103		Dayton Valley	Storey	P	0	0	232	0	0	0	42	0	0	0	2	0	0	1	277
104		Eagle Valley	Carson City	P	26	0	759	1	2	18	0	3,483	0	0	82	0	1	0	4,372
104		Eagle Valley	Douglas	P	0	0	103	0	0	0	0	0	0	0	55	0	0	0	158
104		Eagle Valley	Washoe	P	0	0	13	0	0	0	0	0	0	0	0	0	0	0	13
105		Carson Valley	Carson City	P	0	0	84	0	0	0	0	318	0	0	0	0	0	0	402
105		Carson Valley	Douglas	P	43	0	3,430	0	0	18,320	0	12,654	3,080	0	0	0	113	0	37,640
106		Antelope Valley	Douglas	P	45	0	302	0	0	2,293	0	0	0	0	251	5	0	0	2,896
106		Antelope Valley	Lyon	P	0	0	13	0	0	0	0	0	0	0	0	0	0	0	13
107		Smith Valley	Douglas	P	0	0	16	0	0	0	0	0	0	0	0	0	17	0	33
107		Smith Valley	Lyon	P	516	0	802	0	31	28,653	0	0	0	0	47	54	159	0	30,262
108		Mason Valley	Lyon	P	933	0	847	0	3,081	75,301	255	1,360	0	0	285	5,923	79	3,372	91,436
109		East Walker Area	Lyon		0	0	19	0	0	7,989	0	0	0	0	0	0	11	0	8,019
109		East Walker Area	Mineral		0	0	3	0	0	724	56	0	0	0	0	0	6	0	789
110	A	Walker Lake Valley - Schurz Subarea	Churchill		0	0	4	0	0	0	0	0	0	0	0	0	0	0	4
110	A	Walker Lake Valley - Schurz Subarea	Lyon		0	0	2	0	0	0	0	0	0	0	0	0	1	0	3
110	A	Walker Lake Valley - Schurz Subarea	Mineral		4	0	49	0	0	0	0	0	0	0	3	0	0	0	56
110	B	Walker Lake Valley - Walker Subarea	Mineral		24	0	6	0	0	0	0	0	0	0	1,876	0	0	0	1,906

Basin Number	Sub	Basin Name	County	Inventory Type	COM	CON	DOM	ENV	IND	IRR	MM	MUN	OTH	PWR	QM	REC	STK	WLD	Total
110	C	Walker Lake Valley - Whiskey Flat Subarea	Mineral		0	0	18	2	72	1,797	0	588	0	0	2	0	0	0	2,480
111	A	Alkali Valley - Northern Part	Mineral		0	0	0	0	0	0	0	0	0	0	0	0	0	0	0
111	B	Alkali Valley - Southern Part	Mineral		0	0	0	0	0	0	0	0	0	0	0	0	0	0	0
112		Mono Valley	Mineral		0	0	0	0	0	0	0	0	0	0	0	0	0	0	0
113		Huntoon Valley	Mineral		0	0	0	0	0	0	0	0	0	0	0	0	10	0	10
114		Teels Marsh Valley	Mineral		1	0	1	0	0	0	362	0	0	0	1	0	1	0	366
115		Adobe Valley	Mineral		0	0	0	0	0	0	0	0	0	0	0	0	0	0	0
116		Queen Valley	Mineral		0	0	1	0	0	0	0	0	0	0	0	0	0	0	1
116		Queen Valley	Esmeralda		0	0	0	0	0	0	0	0	0	0	0	0	0	0	0
117		Fish Lake Valley	Esmeralda	P	23	0	215	0	0	28,954	1	0	1	0	3	167	21	0	29,385
118		Columbus Salt Marsh Valley	Esmeralda		0	0	3	0	0	0	184	0	0	0	32	0	1	0	220
119		Rhodes Salt Marsh Valley	Mineral		0	0	1	0	0	0	0	0	0	0	0	0	0	300	301
120		Garfield Flat	Mineral		0	0	0	0	0	0	0	0	0	0	0	0	0	0	0
121	A	Soda Spring Valley - Eastern Part	Mineral		6	0	4	6	0	0	968	357	0	0	0	0	2	0	1,343
121	B	Soda Spring Valley - Western Part	Mineral		0	0	0	0	0	0	0	0	0	0	0	0	0	0	0
122		Gabbs Valley	Nye		0	0	8	0	0	0	2,540	66	0	0	61	0	30	0	2,705
122		Gabbs Valley	Mineral		0	0	1	0	0	4,023	1,072	0	0	0	0	0	42	0	5,138
123		Rawhide Flats	Churchill		0	0	1	0	0	0	0	0	0	0	0	0	27	0	28
124		Fairview Valley	Churchill		0	0	1	0	0	0	0	0	0	0	4	0	8	0	13
125		Stingaree Valley	Churchill		0	0	1	0	0	0	0	0	0	0	0	0	7	0	8
126		Cowkick Valley	Churchill		0	0	1	0	0	0	0	0	0	0	0	0	5	0	6
127		Eastgate Valley Area	Churchill		0	0	1	0	0	14	0	0	0	0	0	0	9	0	24
128		Dixie Valley	Churchill		0	0	18	0	11,030	131	0	0	0	0	218	0	20	262	11,679
128		Dixie Valley	Lander		0	0	0	0	0	0	0	0	0	0	0	0	1	0	1
128		Dixie Valley	Pershing		0	0	2	0	0	5,210	0	0	0	0	0	0	14	0	5,226
129		Buena Vista Valley	Pershing	C	8	0	37	0	0	8,436	665	0	0	0	0	0	16	0	9,162
130		Pleasant Valley	Pershing		0	0	3	0	0	1,719	0	0	0	0	0	0	10	0	1,732
131		Buffalo Valley	Humboldt		0	0	0	0	0	0	0	0	0	0	0	0	16	0	16
131		Buffalo Valley	Lander		0	0	1	2,128	0	0	3,314	0	0	0	0	0	6	0	5,449
131		Buffalo Valley	Pershing		0	0	0	0	0	3,083	0	0	0	0	0	0	11	0	3,094
132		Jersey Valley	Lander		0	0	0	0	0	0	0	0	0	0	0	0	0	0	0
132		Jersey Valley	Pershing		0	0	0	0	0	0	0	0	0	0	0	0	10	0	10
133		Edwards Creek Valley	Churchill		11	0	6	0	0	3,307	0	0	0	0	0	0	44	0	3,368
134		Smith Creek Valley	Churchill		0	0	0	0	0	0	0	0	0	0	0	0	0	0	0
134		Smith Creek Valley	Lander		0	0	3	0	0	1,381	0	0	0	0	0	0	7	0	1,391
134		Smith Creek Valley	Nye		0	0	1	0	0	0	0	0	0	0	0	0	0	0	1
135		Ione Valley	Mineral		0	0	1	0	0	0	0	0	0	0	0	0	0	0	1
135		Ione Valley	Nye		0	0	3	0	0	0	0	0	0	0	53	3	9	0	68
136		Monte Cristo Valley	Mineral		0	0	0	0	0	0	0	0	0	0	0	0	3	4	7
137	A	Big Smoky Valley - Tonopah Flat	Esmeralda		0	0	0	0	0	0	0	0	0	0	13	0	42	0	55
137	A	Big Smoky Valley - Tonopah Flat	Nye		0	0	49	0	608	5,361	13	0	0	0	0	0	8	0	6,039

Basin Number	Sub	Basin Name	County	Inventory Type	COM	CON	DOM	ENV	IND	IRR	MM	MUN	OTH	PWR	QM	REC	STK	WLD	Total
137	B	Big Smoky Valley - Northern Part	Lander	C	2	0	33	0	0	2,618	0	0	0	0	29	0	7	0	2,690
137	B	Big Smoky Valley - Northern Part	Nye	C	28	0	117	0	0	8,577	4,793	0	46	0	389	0	3	0	13,953
138		Grass Valley	Eureka		0	0	1	0	0	126	0	0	0	0	0	0	0	0	127
138		Grass Valley	Lander		0	0	3	0	0	2,801	10	0	0	0	0	0	24	0	2,838
139		Kobeh Valley	Eureka	C	0	0	6	0	0	81	0	0	0	0	0	0	36	0	123
139		Kobeh Valley	Lander	C	0	0	1	0	0	963	0	0	0	0	0	0	11	0	975
140	A	Monitor Valley - Northern Part	Eureka		0	0	0	0	0	0	0	0	0	0	0	0	0	0	0
140	A	Monitor Valley - Northern Part	Lander		0	0	1	0	0	0	0	0	0	0	0	0	5	0	6
140	A	Monitor Valley - Northern Part	Nye		0	0	3	0	0	0	0	0	0	0	0	0	1	0	4
140	B	Monitor Valley - Southern Part	Nye		0	0	11	0	0	0	4	0	0	0	0	0	6	0	21
141		Ralston Valley	Nye		0	0	22	0	8	11	0	273	0	0	36	0	21	0	372
142		Alkali Spring Valley	Esmeralda		0	0	0	0	0	0	0	6	0	0	43	0	5	0	54
143		Clayton Valley	Esmeralda		0	0	1	0	0	0	11,708	40	0	0	42	0	6	0	11,797
144		Lida Valley	Esmeralda		183	0	3	0	0	0	0	0	0	0	26	0	3	0	215
144		Lida Valley	Nye		0	0	1	0	0	0	0	0	0	0	0	0	1	0	2
145		Stonewall Flat	Nye		0	0	0	0	0	0	0	0	0	0	0	0	2	0	2
146		Sarcobatus Flat	Esmeralda		0	0	1	0	0	0	0	0	0	0	0	0	1	0	2
146		Sarcobatus Flat	Nye		0	0	13	0	0	0	0	420	0	0	25	0	11	0	469
147		Gold Flat	Nye		0	0	0	0	0	0	0	0	0	0	380	0	11	0	391
148		Cactus Flat	Nye		0	0	0	0	0	0	0	0	0	0	243	0	5	0	248
149		Stone Cabin Valley	Nye		0	0	3	0	0	5,035	0	0	0	0	630	0	400	0	6,068
150		Little Fish Lake Valley	Nye		0	0	0	0	0	1,118	0	0	0	0	0	0	50	0	1,168
151		Antelope Valley	Eureka		0	0	0	0	0	0	0	0	0	0	0	0	177	0	177
151		Antelope Valley	Nye		0	0	0	0	0	0	0	0	0	0	0	0	0	0	0
152		Stevens Basin	Eureka		0	0	0	0	0	0	0	0	0	0	0	0	27	0	27
153		Diamond Valley	Elko	C	0	0	1	0	0	0	0	0	0	0	0	0	0	0	1
153		Diamond Valley	Eureka	C	4	0	107	0	0	73,879	1,021	1,540	0	0	493	0	20	0	77,064
154		Newark Valley	Eureka	C	0	0	3	0	0	0	0	0	0	0	0	0	0	0	3
154		Newark Valley	White Pine	C	0	0	11	0	14	8,777	1	0	0	0	8	0	6	2	8,819
155	A	Little Smoky Valley - Northern Part	Eureka		0	0	2	0	0	1,279	0	0	0	0	0	0	2	0	1,283
155	A	Little Smoky Valley - Northern Part	Nye		0	0	0	0	0	38	0	0	0	0	0	0	3	0	41
155	A	Little Smoky Valley - Northern Part	White Pine		0	0	2	0	0	2,306	0	0	0	0	0	0	1	0	2,309
155	B	Little Smoky Valley - Central Part	Nye		0	0	0	0	0	0	0	0	0	0	0	0	1	0	1
155	C	Little Smoky Valley - Southern Part	Nye		0	0	0	0	0	0	0	0	0	0	0	0	3	0	3
156		Hot Creek Valley	Nye		0	0	5	0	22	2,252	0	0	0	0	0	0	3	0	2,282
157		Kawich Valley	Nye		0	0	0	0	0	0	0	0	0	0	0	0	0	0	0
158	A	Emigrant Valley - Groom Lake Valley	Lincoln		0	0	0	0	0	0	0	0	0	0	0	0	0	0	0
158	A	Emigrant Valley - Groom Lake Valley	Nye		0	0	0	0	0	0	0	0	0	0	0	0	1	0	1
158	B	Emigrant Valley - Papoose Lake Valley	Lincoln		0	0	0	0	0	0	0	0	0	0	0	0	0	0	0
159		Yucca Flat	Nye		0	0	0	0	0	0	0	0	0	0	0	0	0	0	0
160		Frenchman Flat	Nye		0	0	0	0	0	0	0	0	0	0	0	0	0	0	0

Basin Number	Sub	Basin Name	County	Inventory Type	COM	CON	DOM	ENV	IND	IRR	MM	MUN	OTH	PWR	QM	REC	STK	WLD	Total
161		Indian Springs Valley	Clark	P	4	0	76	0	0	82	0	285	0	0	175	0	0	0	622
162		Pahrump Valley	Clark	P	0	0	10	0	0	0	0	0	0	0	169	0	0	0	179
162		Pahrump Valley	Nye	P	561	5	5,510	0	86	4,477	2	3,800	0	0	464	658	0	0	15,563
163		Mesquite Valley (Sandy Valley)	Clark	P	18	0	436	0	0	45	3	0	0	0	126	0	0	0	628
164	A	Ivanpah Valley - Northern Part	Clark		12	0	93	0	119	0	0	0	0	0	405	0	1	0	630
164	B	Ivanpah Valley - Southern Part	Clark		0	0	0	0	0	0	0	0	0	0	0	0	0	0	0
165		Jean Lake Valley	Clark		0	0	1	0	0	0	165	0	0	0	0	0	0	0	166
166		Hidden Valley	Clark		0	0	0	0	0	0	8	0	0	0	0	0	0	0	8
167		Eldorado Valley	Clark		0	71	6	0	0	0	198	0	0	0	0	0	0	0	275
168		Three Lakes Valley - Northern Part	Lincoln		0	0	1	0	0	0	0	0	0	0	0	0	0	0	1
169	A	Tikapoo Valley - Northern Part	Lincoln		0	0	1	0	0	0	0	0	0	0	0	0	1	0	2
169	B	Tikapoo Valley - Southern Part	Lincoln		0	0	0	0	0	0	0	0	0	0	0	0	0	0	0
170		Penoyer Valley (Sand Spring Valley)	Lincoln	P	13	0	36	0	0	11,317	0	0	0	0	1	0	61	0	11,428
170		Penoyer Valley (Sand Spring Valley)	Nye	P	0	0	5	0	0	0	0	0	0	0	0	0	0	0	5
171		Coal Valley	Lincoln		0	0	1	0	0	0	0	0	0	0	0	0	1	0	2
171		Coal Valley	Nye		0	0	0	0	0	0	0	0	0	0	0	0	0	0	0
172		Garden Valley	Lincoln		0	0	2	0	5	232	0	0	0	0	0	0	4	0	243
172		Garden Valley	Nye		0	0	6	0	0	166	0	0	0	0	0	0	1	0	173
173	A	Railroad Valley - Southern Part	Nye		0	0	1	0	0	4,322	0	0	0	0	0	0	31	0	4,354
173	B	Railroad Valley - Northern Part	Lincoln		0	0	4	0	0	0	0	0	0	0	0	0	0	0	4
173	B	Railroad Valley - Northern Part	Nye		1	0	30	0	72	12,997	0	0	0	0	0	1,994	21	0	15,115
173	B	Railroad Valley - Northern Part	White Pine		0	0	0	0	0	0	0	0	0	0	0	0	1	0	1
174		Jakes Valley	White Pine		0	0	1	0	0	0	0	0	0	0	0	0	3	0	4
175		Long Valley	Elko		0	0	2	0	0	0	0	0	0	0	0	0	0	0	2
175		Long Valley	White Pine		0	0	1	0	0	0	430	0	0	0	0	0	27	0	458
176		Ruby Valley	Elko		4	0	108	0	0	11,386	0	0	0	0	24	0	91	1	11,615
176		Ruby Valley	White Pine		0	0	0	0	0	0	109	0	0	0	0	0	2	0	111
177		Clover Valley	Elko	C	34	0	53	0	0	8,654	0	0	0	0	25	0	31	0	8,797
178	A	Butte Valley - Northern Part	Elko		0	0	2	0	0	0	0	0	0	0	0	0	15	0	17
178	B	Butte Valley - Southern Part	Elko		0	0	0	0	0	0	0	0	0	0	0	0	2	0	2
178	B	Butte Valley - Southern Part	White Pine		0	0	0	0	0	0	0	0	0	0	0	0	23	0	23
179		Steptoe Valley	Elko	C	0	0	9	0	0	729	0	0	0	0	0	0	3	0	741
179		Steptoe Valley	White Pine	C	50	0	435	0	623	26,327	15,944	5,908	0	1,086	1,380	32	26	2	51,813
180		Cave Valley	Lincoln		0	0	4	0	0	0	0	0	0	0	0	0	8	0	12
180		Cave Valley	White Pine		0	0	1	0	0	0	0	0	0	0	0	0	1	0	2
181		Dry Lake Valley	Lincoln		0	0	4	0	0	0	0	0	0	0	0	0	4	0	8
182		Delamar Valley	Lincoln		0	0	1	0	0	0	0	0	0	0	0	0	1	0	2
183		Lake Valley	Lincoln	C	0	0	19	0	0	13,751	0	0	0	0	13	0	33	0	13,816
184		Spring Valley	White Pine		0	0	22	0	0	1,507	20	0	0	0	79	0	41	58	1,727
185		Tippett Valley	White Pine		0	0	0	0	0	306	0	0	0	0	0	0	1	0	307
186	A	Antelope Valley - Southern Part	Elko		0	0	0	0	0	0	4	0	0	0	0	0	2	0	6

Basin Number	Sub	Basin Name	County	Inventory Type	COM	CON	DOM	ENV	IND	IRR	MM	MUN	OTH	PWR	QM	REC	STK	WLD	Total
186	A	Antelope Valley - Southern Part	White Pine		0	0	0	0	0	0	0	0	0	0	0	0	3	0	3
186	B	Antelope Valley - Northern Part	Elko		0	0	1	0	0	0	0	0	0	0	11	0	18	0	30
187		Goshute Valley	Elko		0	0	8	0	0	0	0	2,012	0	0	1,720	0	57	0	3,797
188		Independence Valley (Pequop Valley)	Elko		0	0	17	0	0	3,758	6	0	0	0	26	0	45	0	3,852
189	A	Thousand Springs Valley - Herrill Siding Area	Elko		0	0	14	0	0	110	0	0	0	0	0	0	34	0	158
189	B	Thousand Springs Valley - Toano Area	Elko		0	0	8	0	0	0	0	0	0	0	5	0	65	6	85
189	C	Thousand Springs Valley - Rocky Butte Area	Elko		0	0	0	0	0	0	0	0	0	0	0	0	9	0	9
189	D	Thousand Springs Valley - Montello Area	Elko		8	0	50	0	0	6,413	0	0	0	0	0	0	51	0	6,522
190		Grouse Greek Valley	Elko		0	0	0	0	0	0	0	0	0	0	0	0	3	0	3
191		Pilot Creek Valley	Elko		0	20	86	0	0	0	28	0	0	0	0	0	13	0	147
192		Great Salt Lake Desert	Elko		0	0	3	0	0	0	0	0	0	0	0	0	1	0	4
193		Deep Creek Valley	White Pine		0	0	0	0	0	0	0	0	0	0	0	0	0	0	0
194		Pleasant Valley	White Pine		0	0	0	0	0	227	0	0	0	0	0	0	0	0	227
195		Snake Valley	White Pine		10	0	39	0	0	6,889	0	0	0	0	60	0	5	0	7,002
196		Hamlin Valley	Lincoln		0	0	1	0	0	0	0	0	9	0	0	0	39	0	49
197		Escalante Desert	Lincoln		0	0	0	0	0	0	0	0	0	0	0	0	1	0	1
198		Dry Valley	Lincoln	P	0	0	31	0	0	5,241	0	0	0	0	0	5	7	0	5,284
199		Rose Valley	Lincoln	P	0	0	7	0	0	663	0	0	0	0	0	0	0	0	670
200		Eagle Valley	Lincoln		0	0	33	0	0	281	0	0	0	0	4	0	0	0	318
201		Spring Valley	Lincoln		0	0	7	0	0	764	0	0	0	0	10	0	0	0	781
202		Patterson Valley	Lincoln		0	0	30	0	0	3,862	0	317	0	0	4	0	4	1	4,219
203		Panaca Valley	Lincoln	P	54	0	129	0	0	13,760	3	262	0	0	17	0	3	0	14,228
204		Clover Valley	Lincoln		0	0	10	0	33	751	0	0	0	0	2	11	22	0	829
205		Lower Meadow Valley Wash	Clark		4	0	11	0	0	735	0	0	0	0	0	0	0	0	750
205		Lower Meadow Valley Wash	Lincoln		3	0	23	0	0	650	0	431	0	0	0	3	2	0	1,112
206		Kane Springs Valley	Lincoln		0	0	0	0	0	0	0	0	0	0	0	0	0	0	0
207		White River Valley	Lincoln		0	0	1	0	0	0	0	0	0	0	0	0	0	0	1
207		White River Valley	Nye		0	0	40	0	0	1,897	0	0	0	0	10	0	113	0	2,060
207		White River Valley	White Pine		5	20	157	0	0	17,751	0	0	0	0	64	2	149	0	18,147
208		Pahroc Valley	Lincoln		0	0	2	0	0	0	0	0	0	0	0	0	4	0	6
208		Pahroc Valley	Nye		0	0	1	0	0	0	0	0	0	0	0	0	5	0	6
209		Pahranagat Valley	Lincoln	P	35	0	116	0	0	5,163	0	287	0	0	1	0	12	59	5,673
210		Coyote Spring Valley	Clark	P	0	0	0	0	0	0	0	1,494	0	0	0	0	0	0	1,494
210		Coyote Spring Valley	Lincoln	P	0	0	2	0	0	568	0	0	0	0	0	0	0	0	570
211		Three Lakes Valley - Southern Part	Clark		300	0	8	0	0	0	0	0	0	0	1,582	0	0	0	1,890
212		Las Vegas Valley	Clark	P	836	0	4,981	2,697	350	2,552	784	49,937	977	0	7,042	5,276	0	114	75,546
213		Colorada River Valley	Clark		6	0	25	0	0	0	58	3	0	0	610	134	3	0	840
214		Piute Valley	Clark		10	0	20	0	0	0	313	206	0	0	261	0	10	0	820
215		Black Mountains Area	Clark	P	0	0	1	0	1,448	0	253	0	0	0	6	0	0	0	1,708
216		Garnet Valley	Clark	P	21	0	0	0	516	0	194	759	0	0	30	0	0	0	1,520
217		Hidden Valley (North)	Clark		0	0	1	0	0	0	0	0	0	0	0	0	0	0	1

Basin Number	Sub	Basin Name	County	Inventory Type	COM	CON	DOM	ENV	IND	IRR	MM	MUN	OTH	PWR	QM	REC	STK	WLD	Total
218		California Wash	Clark		0	0	16	0	343	0	0	411	0	0	0	0	0	0	771
219		Muddy River Springs Area	Clark		37	0	44	0	1,349	251	0	2,487	0	0	5	0	0	0	4,173
220		Lower Moapa Valley	Clark		116	0	29	87	0	1,551	220	0	0	0	0	0	0	0	2,003
221		Tule Desert	Lincoln		0	0	0	0	0	0	0	0	0	0	0	0	1	0	1
222		Virgin River Valley	Clark		0	0	22	0	0	0	0	4,115	0	0	252	0	7	0	4,396
222		Virgin River Valley	Lincoln		0	0	0	0	0	0	0	1,866	0	0	0	21	5	0	1,892
223		Gold Butte Area	Clark		0	0	0	0	0	0	1	0	0	0	0	0	0	0	1
224		Greasewood Area	Clark		0	0	0	0	0	0	0	0	0	0	0	0	0	0	0
225		Mercury Valley	Nye		0	0	0	0	0	0	0	0	0	0	0	0	0	0	0
226		Rock Valley	Nye		0	0	0	0	0	0	0	0	0	0	0	0	0	0	0
227	A	Forty Mile Canyon - Jackass Flat	Nye		0	0	2	0	0	0	0	0	0	0	0	0	2	0	4
227	B	Forty Mile Canyon - Buckboard Mesa	Nye		0	0	0	0	0	0	0	0	0	0	0	0	0	0	0
228		Oasis Valley	Nye		6	0	26	0	0	194	1	286	0	0	0	50	1	0	564
229		Crater Flat	Nye		0	0	0	0	0	0	192	0	0	0	0	0	0	0	192
230		Amargosa Desert	Nye	P	1,907	0	269	0	0	13,259	315	160	0	0	277	0	0	5	16,192
231		Grapevine Canyon	Esmeralda		0	0	0	0	0	0	0	0	0	0	0	0	1	0	1
231		Grapevine Canyon	Nye		0	0	0	0	0	0	0	0	0	0	0	0	0	0	0
232		Oriental Wash	Esmeralda		0	0	0	0	0	0	228	0	0	0	0	0	0	0	228
TOTAL					10,892	162	43,353	11,145	35,094	1,018,300	101,564	146,139	6,008	2,263	38,285	17,680	5,869	5,499	1,442,253